

# PARTS LIST



## **heupel** Reinigungstechnik GmbH

Gottlieb Daimler Str. 6  
88214 Ravensburg

Tel: (049) 0751 - 35905-3  
Fax: (049) 0751 - 35905-59

email: [info@heupel-gmbh.de](mailto:info@heupel-gmbh.de)  
[www.heupel-gmbh.de](http://www.heupel-gmbh.de)

**Shop: [www.heupel-shop.de](http://www.heupel-shop.de)**

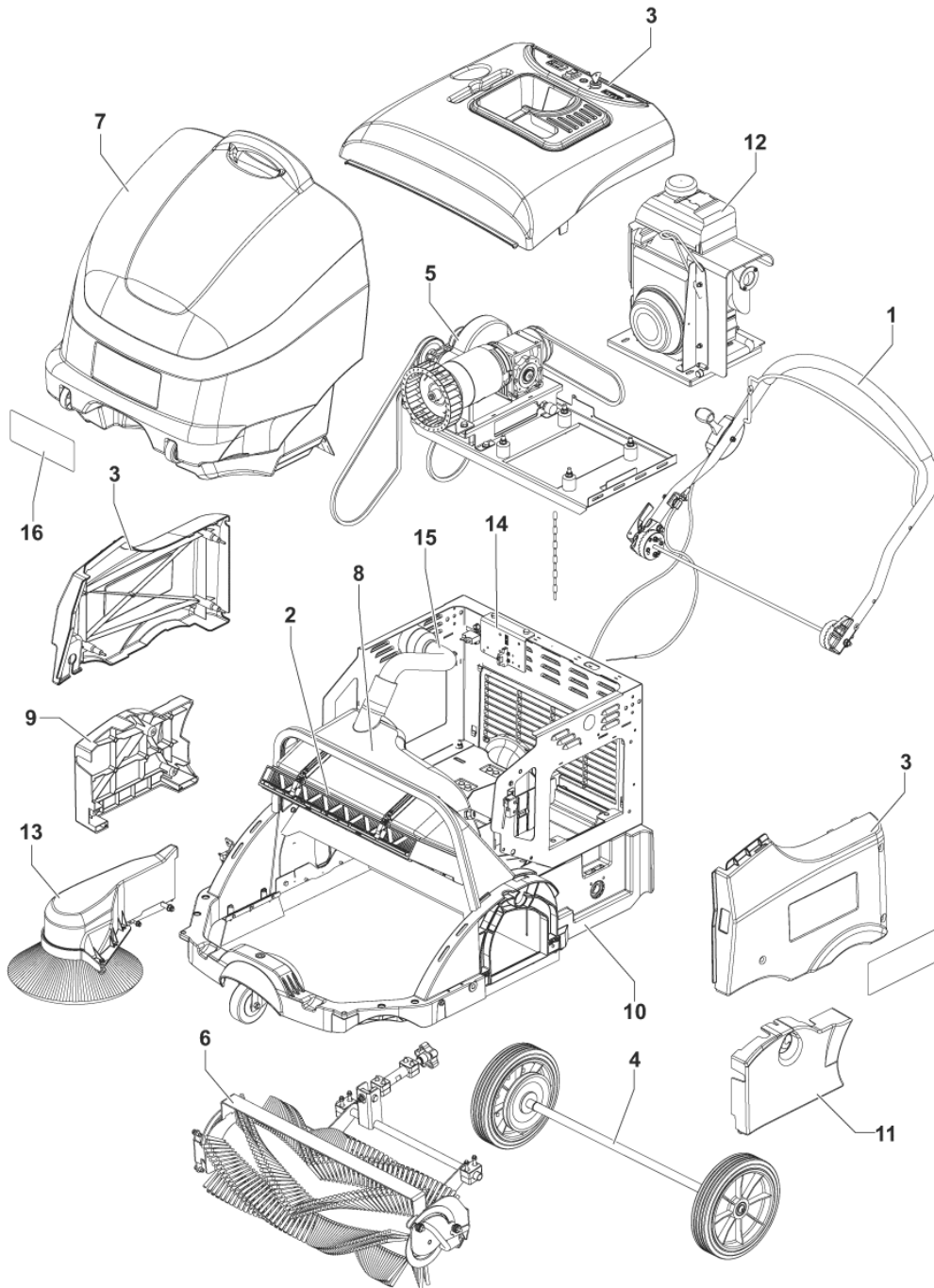
Heupel - Reinigungstechnik - Beratung, Verkauf, Service, alles aus einer Hand.

2016.04.18

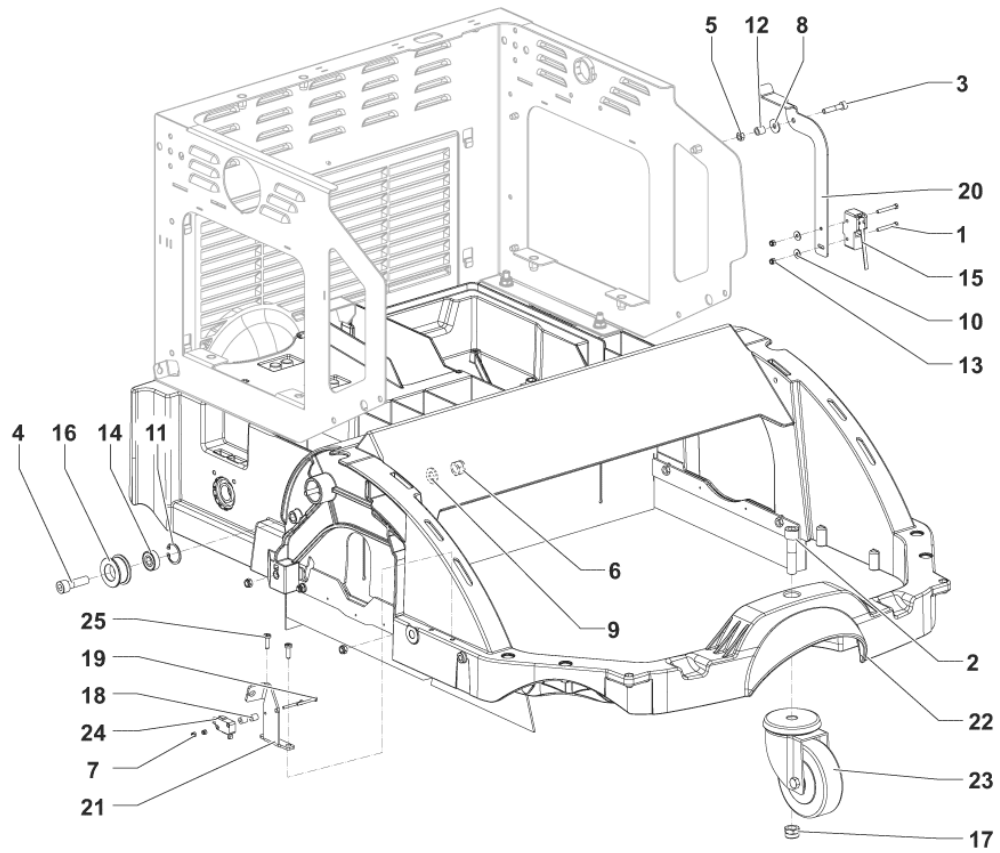
# TABLE OF CONTENTS

---

GENERAL VIEW .....	1
CHASSIS SYSTEM .....	3
FRAME SYSTEM .....	5
SKIRT SYSTEM .....	7
COVERS SYSTEM .....	9
CONTROL PANEL SYSTEM .....	11
HANDLE SYSTEM .....	13
TRASSMISSION SYSTEM .....	15
ENGINE SYSTEM .....	19
ELECTRICAL SYSTEM .....	21
WHEELS SYSTEM .....	23
MAIN BROOM SYSTEM .....	25
WIRING DIAGRAM .....	27
RIGHT BROOM .....	29
LEFT BROOM (OPTIONAL) .....	31
FILTER SYSTEM .....	33
FILTER SHAKER MANUAL .....	35
HOPPER SYSTEM .....	37
Recommended spare parts .....	39
ACCESSORIES .....	41
Option .....	43



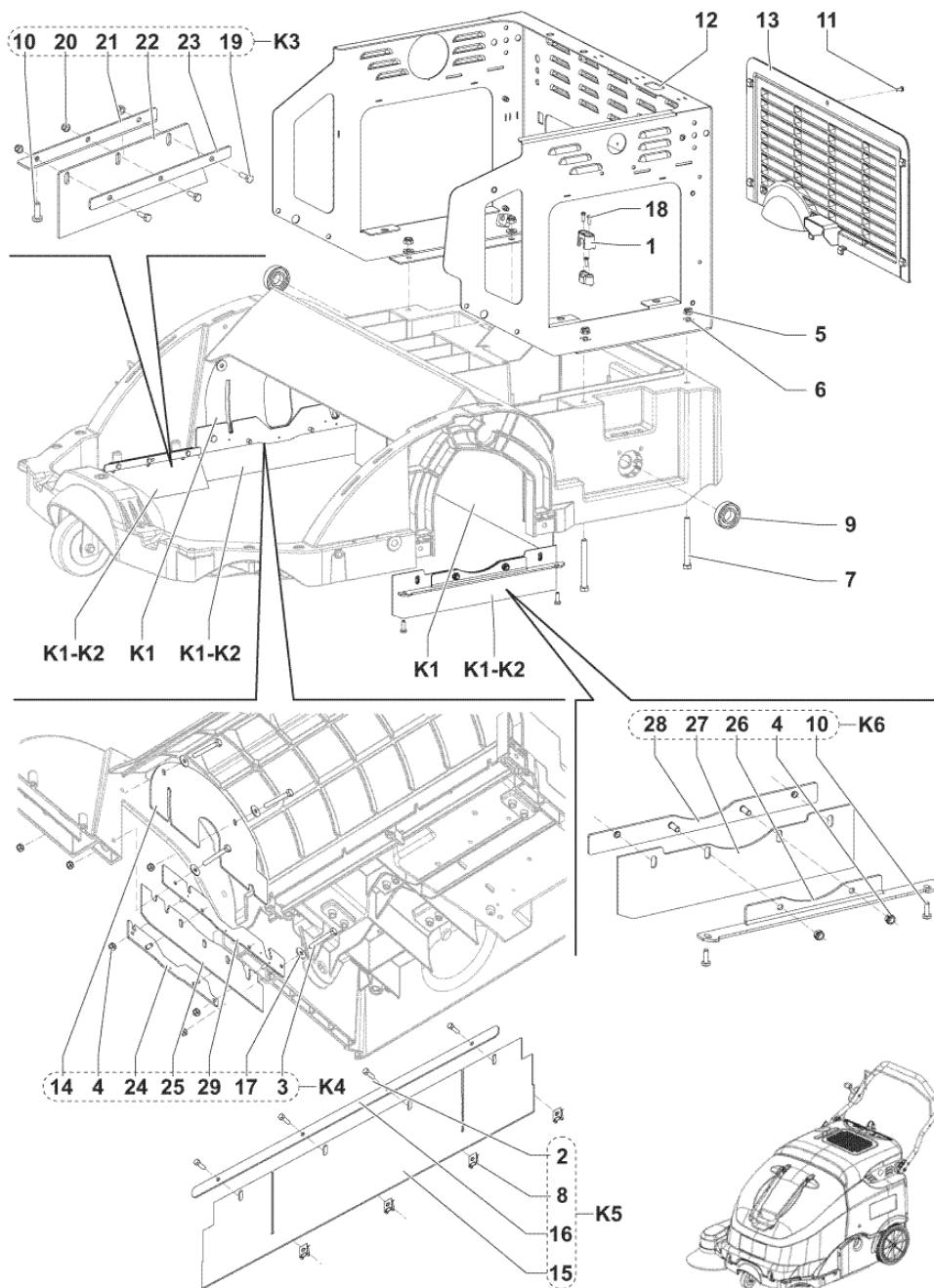
Pos.	Artikel-Nr.	Menge	Variante	Notes
1		1	HANDLE BAR ASSEMBLY	
2		1	FILTER ASSEMBLY	
3		1	COVERS PROTECTION ASSEMBLY	
4		1	WHEELS TRACTION ASSEMBLY	
5		1	TRANSMISSION ASSEMBLY	
6		1	CENTRAL BROOM ASSEMBLY	
7		1	HOPPER ASSEMBLY	
8		1	SHAKER ELECTRIC FILTER ASSEMBLY	
9		1	HATCH RIGHT ASSEMBLY	
10		1	CHASSIS ASSEMBLY	
11		1	HATCH LEFT ASSEMBLY	
12		1	ENGINE ASSEMBLY	
13		1	BROOM RIGHT SIDE ASSEMBLY	
14		1	WIRING SYSTEM ASSEMBLY	
15		1	WET BY-PASS ASSEMBLY	
16	1466747000	1	DECALS FLOORTEC 760 KIT	



Pos.	Artikel-Nr.	Menge	Variante	Notes
1		2	K1	
2		1	K1	
3		1	K1	
4		1	K1	
5		1	K1	
6		1	K1	
7		2	K1	
8		1	K1	
9		1	K1	
10		2	K1	
11		1	K1	
12		1	K1	
13		2	K1	
14		1	K1	
15	1466506000	1	MICROSWITCH 10A 250V PKD	
16		1	K1	
17		1	K1	
18		2	K1	
19		2	K1	
20	1464998000	1	BRACKET FOR CONTAINER-COVER SWITCH	
21	1465013000	1	SUPPORT RIGHT SIDE BROOM SWITCH	
22	1465015000	1	CHASSIS	
23	909 6602 000	1	Lenkrolle	
24	9100000792	1	MICROSWITCH 16A 250V PKD	
25		2	K1	
K1	1465461000	1	HARDWARE CHASSIS KIT	[1]

Part Notes:

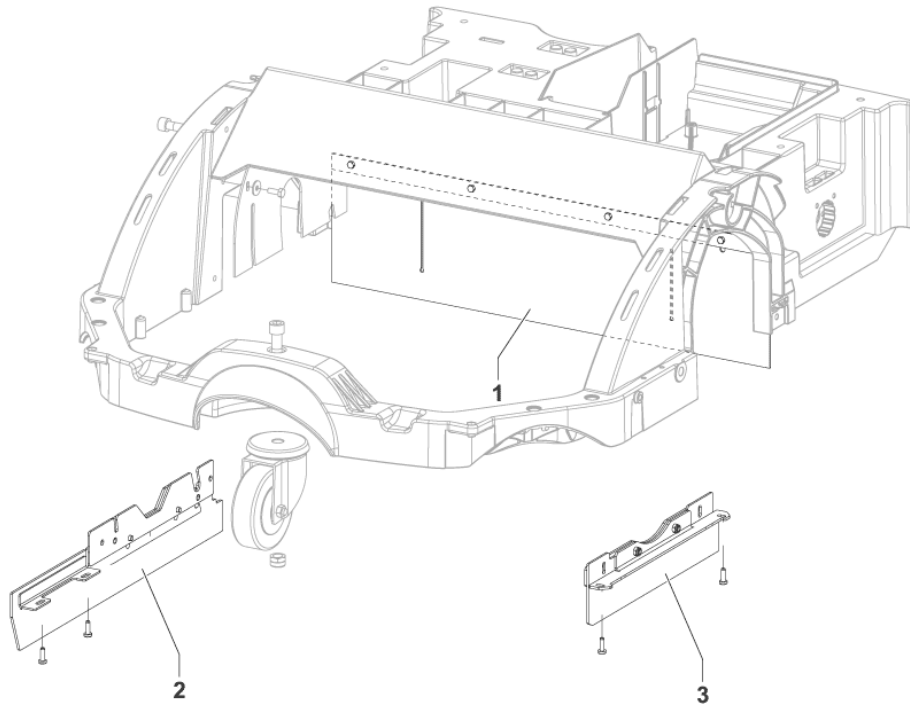
[1] - NOT SHOWN



Pos.	Artikel-Nr.	Menge	Variante	Notes
1		1	K7	
2		4	K5-K7	
3		3	K4-K7	
4		6	K4-K7	
5		4	K7	
6		4	K7	
7		4	K7	
8		4	K5-K7	
9		2	K7	
10		4	K3-K6	
11		1	K7	
12	1464654000	1	CHASSIS REAR	
13	1464655000	1	GRID REAR VENTING	
14		1	K1-K4	
15		1	K1-K5	
16		1	K5-K7	
17		2	K4-K7	
18		3	K7	
19		3	K3-K7	
20		3	K3	
21		1	K3	
22		1	K1-K3	
23		1	K3	
24		1	K4	
25		1	K1-K4	
26		1	K6	
27		1	K1-K6	
28		1	K6	
29		1	K4	
K1	1465463000	1	SKIRTS KIT	[1]
K2*	1465541000	1	Seitenschürzen-Set, n. mark.	[2]
K3	1465595000	1	SKIRTS RECYCLING KIT	[1]
K4	1465596000	1	SKIRT RIGHT SIDE KIT	[1]
K5	1465597000	1	SKIRT REAR KIT	[1]
K6	1465598000	1	SKIRT LEFT SIDE KIT	[1]
K7	1465462000	1	HARDWARE REAR CHASSIS KIT	[3]

Part Notes:

- [1] - UNTIL MACHINE S.No 3810152500015
- [2] - OPTION
- [3] - NOT SHOWN



---

Pos.	Artikel-Nr.	Menge	Variante	Notes
1	1466491000	1	SKIRT CENTRAL REAR KIT	[1]
2	1466488000	1	SKIRT RECYCLING RT SIDE KIT	[2]
3	1466490000	1	SKIRT LT SIDE KIT	[1]

## Part Notes:

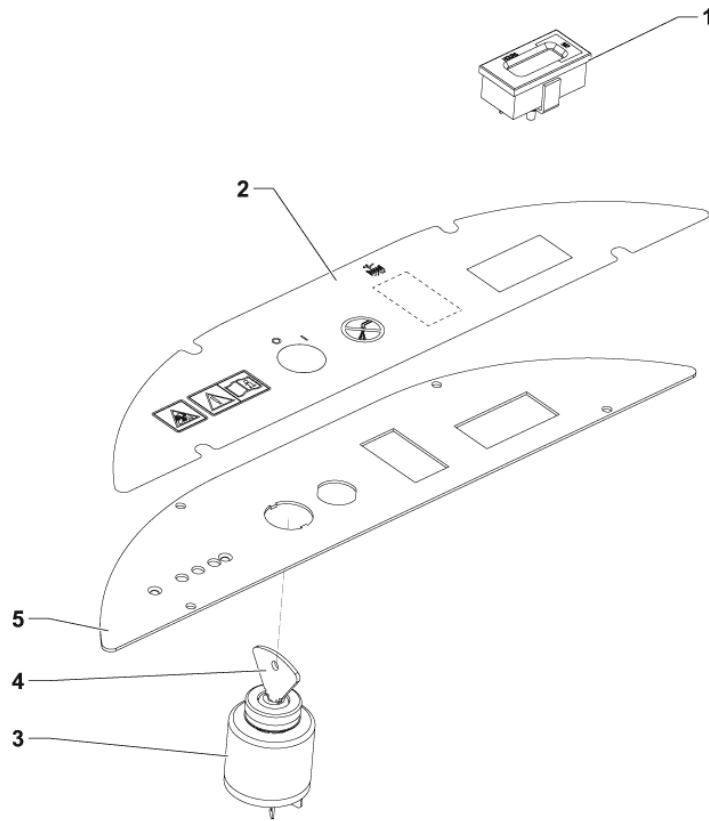
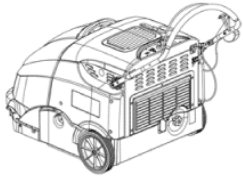
- [1] - STARTING MACHINE S.No 3810152500016 - SEE TSB-FC-2015-014  
[2] - STARTING MACHINE S.No 3810152500016 - SEE TSB-FC-2015-014- INST. INSTR. 1466484000



Pos.	Artikel-Nr.	Menge	Variante	Notes
1		6	K1	
2	1465545000	1	COVER UPPER BLACK KIT	
3		5	K1	
4	1465544000	1	COVERS SIDE BLACK KIT	
5		2	K1	
6	1465104000	1	SKIRT PROTECTION	
7		4	K1	
8	1465482000	1	HOOK FOR BONNET CLOSING	
9		4	K1	
10		2	K1	
11	1466001000	1	COVER UPPER BLACK PKD	
12	1465138000	1	COVER UPPER FOR PETROL	
13		2	K1	
14		2	K1	
15		2	K1	
16	1464896000	1	LATCH WITH FOLD AWAY	
17		2	K1	
18		1	K1	
19		1	K1	
20		1	K1	
21	1465527000	1	PROTECTION POLY FOR MICROSWITCH	
22		1	K1	
23		2	K1	
[K1]	1465464000	1	HARDWARE COVERS KIT	[1]
[K2]	1465920000	1	FIXING COVER KIT	

## Part Notes:

[1] - NOT SHOWN

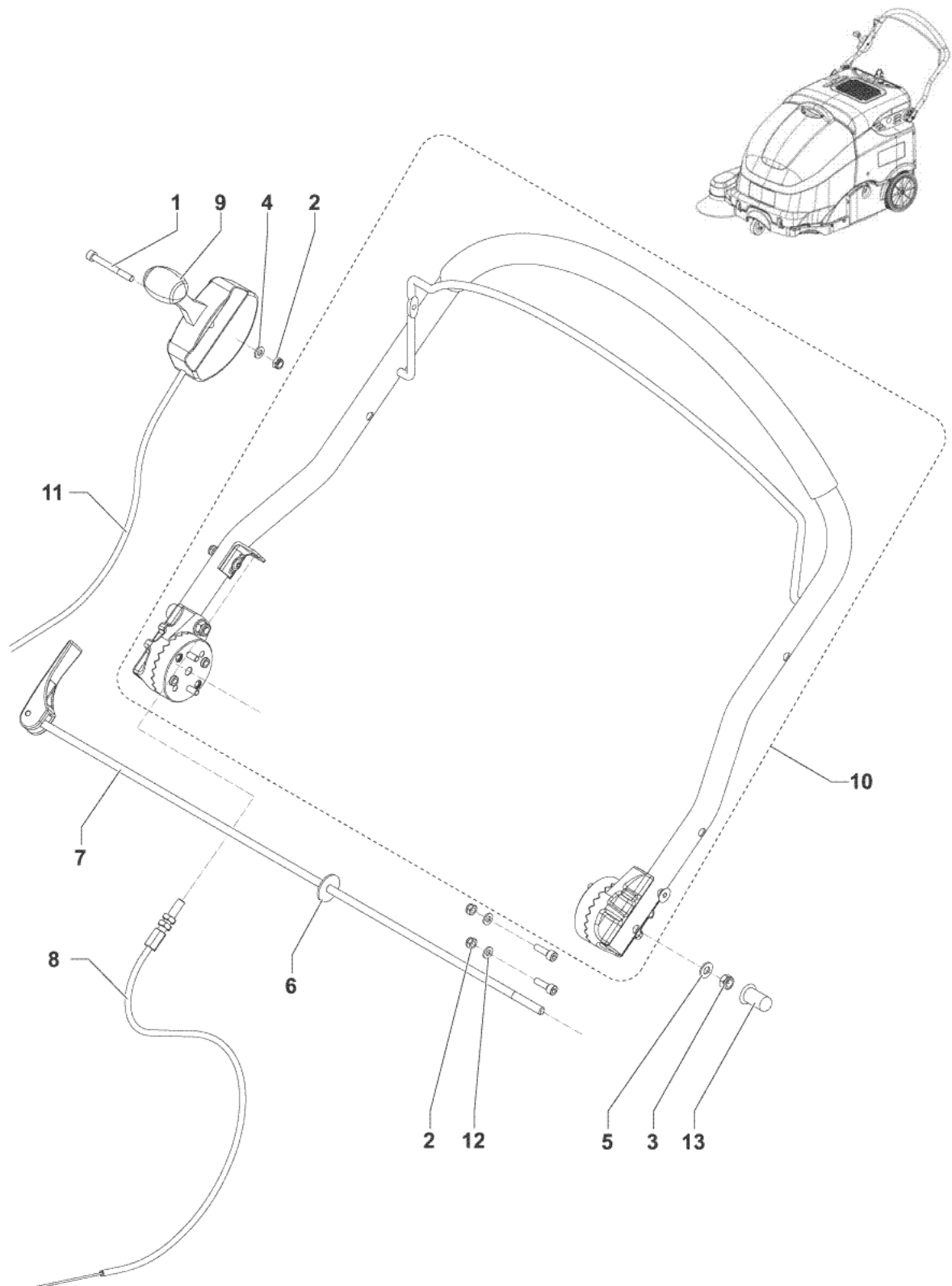


---

Pos.	Artikel-Nr.	Menge	Variante	Notes
1*	9096951000	1	Betriebsstundenzähler 24V	[1]
2	1465005000	1	DECAL CONTROL PANEL	
3	33020442	1	Schlüsselschalter	
4	146 0073 00	1	Zündschlüssel SR 1300 HD	[2]
5	1464765000	1	PANEL CONTROL	

## Part Notes:

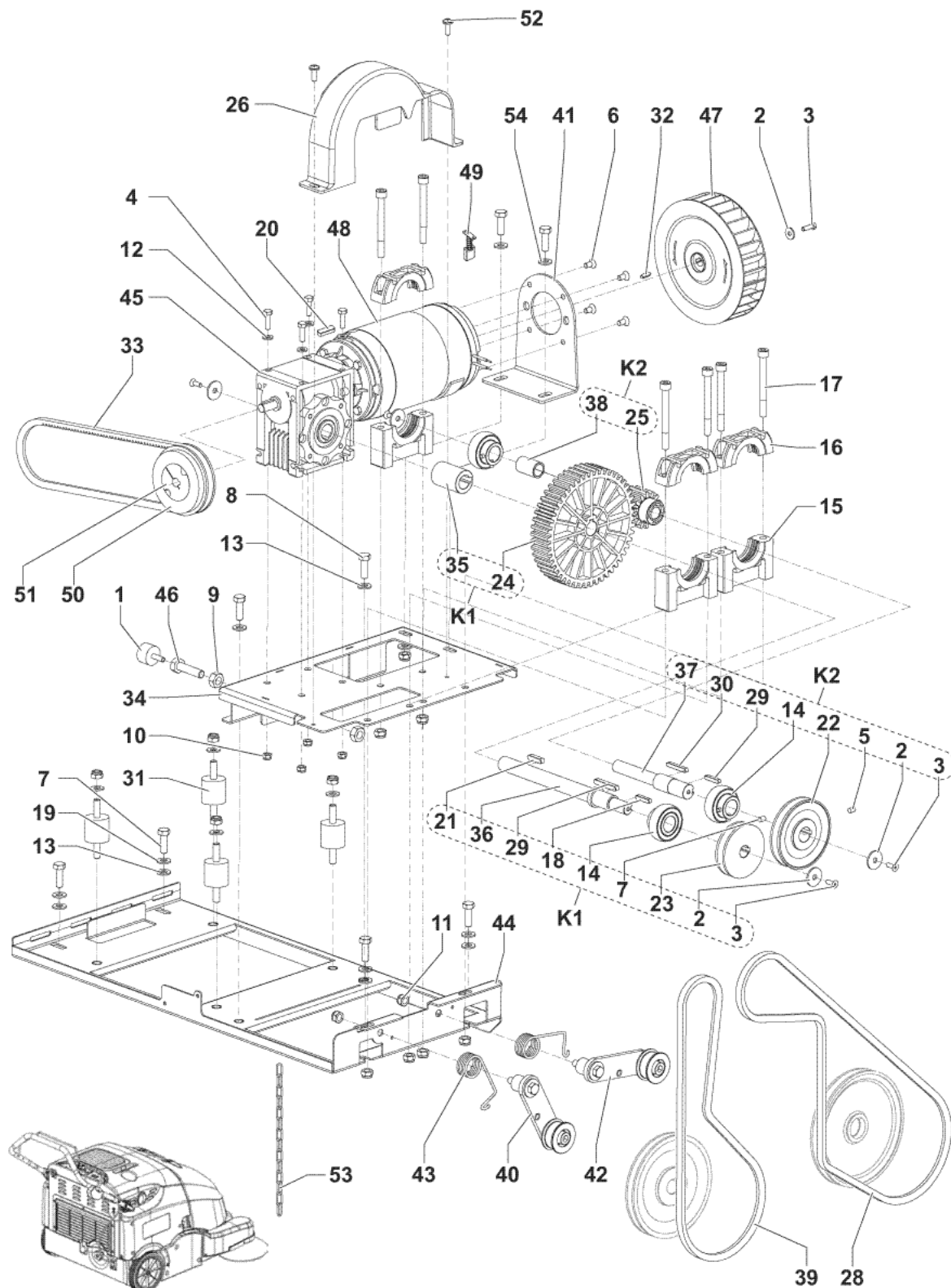
- [1] - OPTION  
[2] - 1467014000



Pos.	Artikel-Nr.	Menge	Variante	Notes
1		1	K1	
2		6	K1	
3		1	K1	
4		1	K1	
5		1	K1	
6		1	K1	
7	1464673000	1	LEVER HANDLE RELEASE	
8	1464908000	1	CABLE TRACTION	
9	1465017000	1	LEVER RIGHT SIDE BROOM CONTROL	
10	1465160000	1	HANDLE BAR ROUND	
11	1465532000	1	CABLE FOR SIDE BROOM LEVER	
12		4	K1	
13		1	K1	
[K1]	1465466000	1	HARDWARE HANDLE KIT	[1]

## Part Notes:

[1] - NOT SHOWN



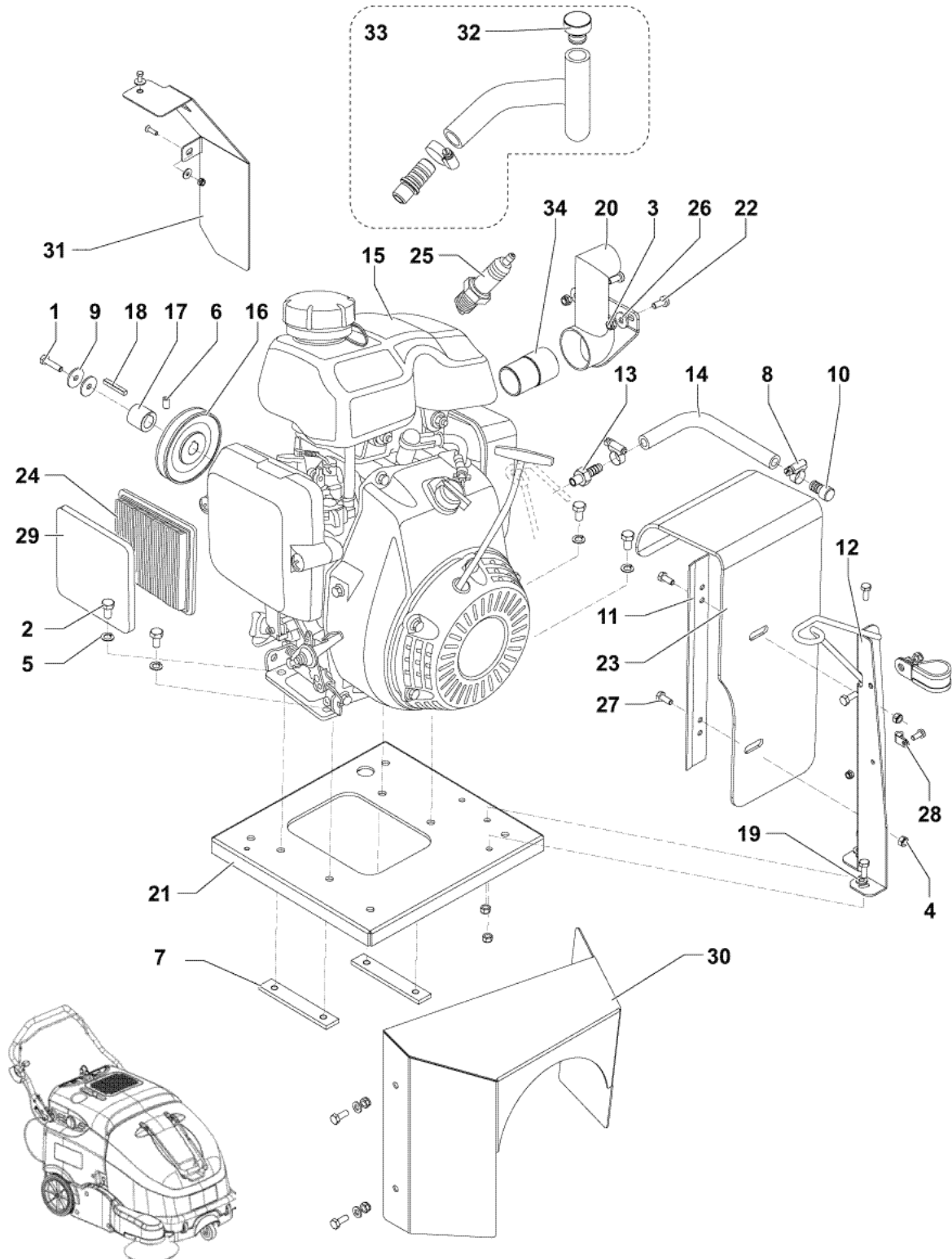
Pos.	Artikel-Nr.	Menge	Variante	Notes
1	33003131	1	Dämpfer	
2		5	K1-K2-K3	
3		5	K1-K2-K3	
4		4	K3	
5		1	K2	
6		4	K3	
7		2	K1	
8		8	K2	
9		2	K3	
10		4	K3	
11		12	K3	
12		6	K3	
13		10	K1-K2	
14	145 1123 000	3	Lager YAT204	
15	145 1976 000	3	Lagerbock unten	
16	145 1977 000	3	Lagerbock oben	
17		6	K3	
18		1	K1	
19		6	K3	
20		1	K3	
21		1	K1	
22		1	K2	
23		1	1K	
24	1466521000	1	GEAR SPUR PLASTIC 150P 50T PKD	
25	1466522000	1	GEAR SPUR PLASTIC 42P 14T PKD	
26	146 0605 000	1	Deckel	
28	146 0767 000	1	Keilriemen XPZ 1162SW 700S	
29		1	K1	
30		1	K2	
31	146 1318 000	4	Silentbloc zu SW 700 SP	
32		1	K2	
33	1464045000	1	Riemenkit	
34	1464681000	1	SUPPORT GEAR BOX	
35		1	K1	
36		1	K1	
37		1	K2	
38		1	K2	
39	1464687000	1	BELT XPZ 912	
40	1465601000	1	TENSIONER BELT WHEELS KIT	
41	1464703000	1	SUPPORT BEARING	
42	1465602000	1	TENSIONER BELT BROOM KIT	
43	1464719000	2	SPRING TORSION 2.8X24	
44	1464722000	1	PLATE TRANSMISSION SUPPORT	
45	1464725000	1	REDUCTION GEAR COMPLETE	
46		1	K3	
47	1464747000	1	FAN D.160 X40	
48	1464756000	1	DINAMOTOR MP80 12V 200 WDINAMOTOR MP80 12V 198 W	
49	1464433000	1	Kohlebürsten-Kit (4St.)BRUSH CARBON KIT 4PCS	
50	1465298000	1	PULLEY POGGILOCK SPZ D.85	
51	1465299000	1	BUSHING POGGILOCK 1210 D.11	
52		2	K3	
53	1465607000	1	CHAIN GROUND KIT	
54		4	K3	
K1	1466784000	1	SHAFT TRACTION KIT	
K2	1466785000	1	SHAFT BROOM KIT	
K3	1465467000	1	HARDWARE TRASMISSION KIT	[1]

Part Notes:

[1] - NOT SHOWN

---

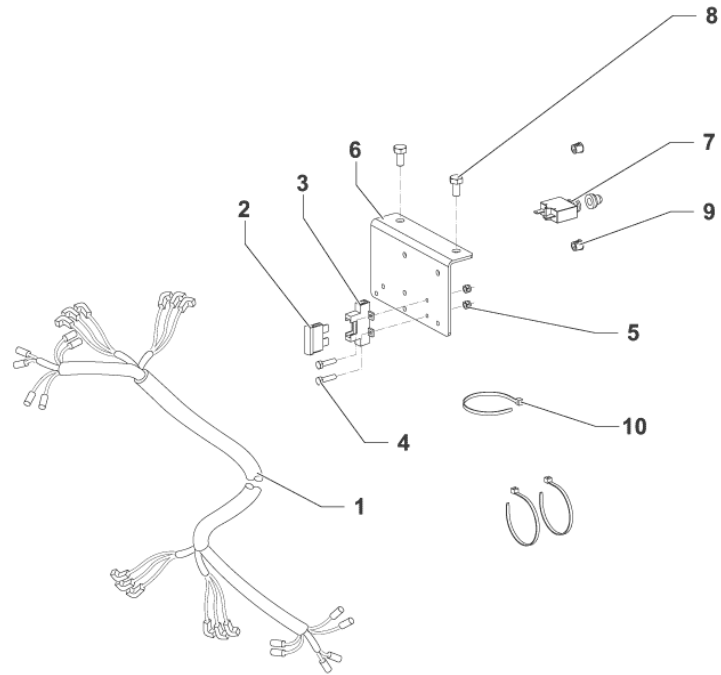
**Comments:**



Pos.	Artikel-Nr.	Menge	Variante	Notes
1		1	K1	
2		4	K1	
3		3	K1	
4		4	K1	
5		4	K1	
6		1	K1	
7		2	K1	
8		2	K1	
9		2	K1	
10		1	K1	
11		1	K1	
12		1	K1	
13		1	K1	
14		1	K1	
15	146 0827 000	1	Benzinmotor	
16		1	K1	
17		1	K1	
18	146 0830 000	1	Keil 5X5X36 UNI6604A	
19		2	K1	
20	1465304000	1	PIPE EXHAUST	
21	1465225000	1	PLATE ENGINE SUPPORT	
22		2	K1	
23	1465229000	1	PROTECTION EXHAUST	
24	146 0823 000	1	Luftfilter	
25	146 0822 000	1	Zündkerze	
26		2	K1	
27		2	K1	
28		2	K1	
29	146 0824 000	1	Vorfilter	
30	1465619000	1	CONVEYOR AIR	
31	1465620000	1	PANEL AIR	
32	1465640000	1	CAP OIL D.18	
33	1465643000	1	HOSE OIL FILLING KIT	
34	1465550000	1	EXTENSION FOR MUFFLER	
K1	1465468000	1	HARDWARE ENGINE KIT	[1]

## Part Notes:

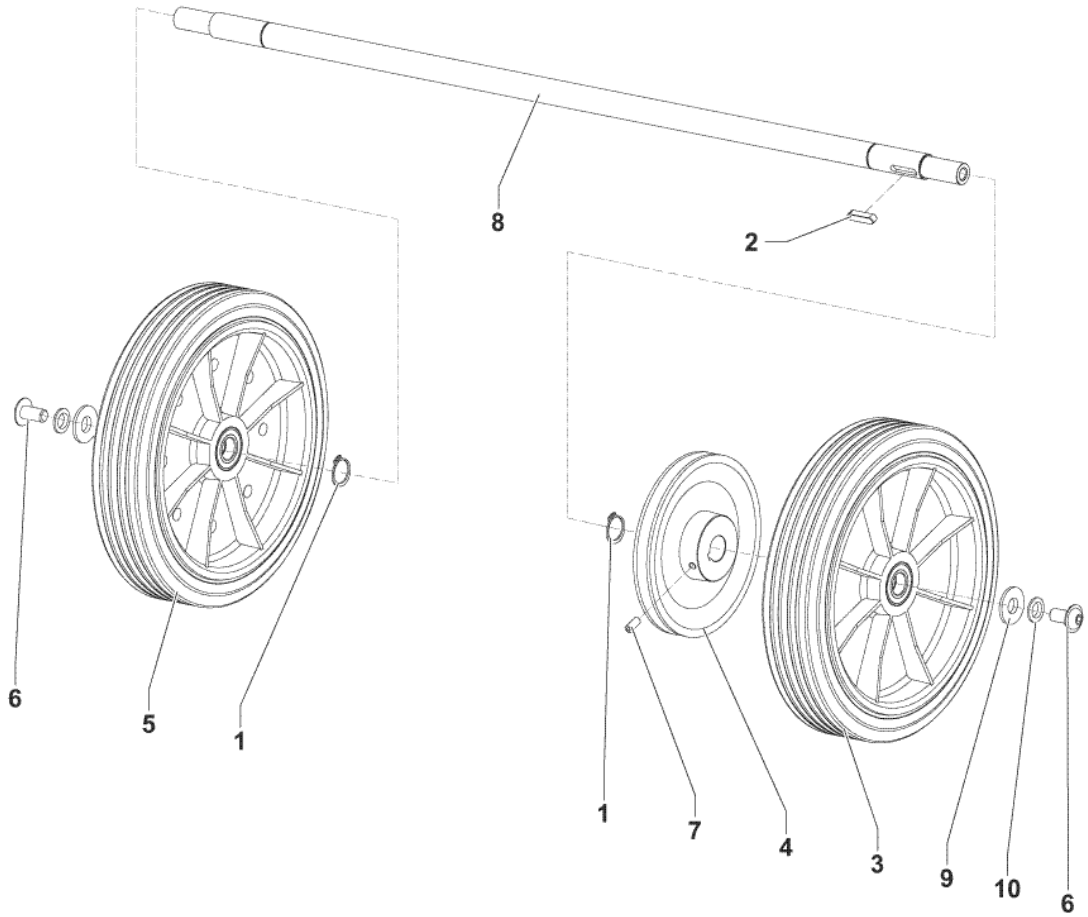
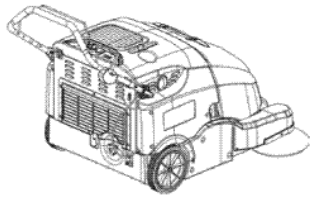
[1] - NOT SHOWN



Pos.	Artikel-Nr.	Menge	Variante	Notes
1	1464755000	1	HARNES MACHINE P	
2	146 1776 000	1	Sicherung 20A	
3	146 0660 000	1	Halter zu Sicherung BA-	
4		2	K1	
5		2	K1	
6	1464698000	1	SUPPORT RELAIS AND FUSES	
7	1465605000	1	CIRCUIT BREAKER 5A KIT	
8		2	K1	
9		2	K1	
10		3	K1	
[K1]	1465478000	1	HARDWARE ELECTRICAL SYSTEM KIT	[1]

## Part Notes:

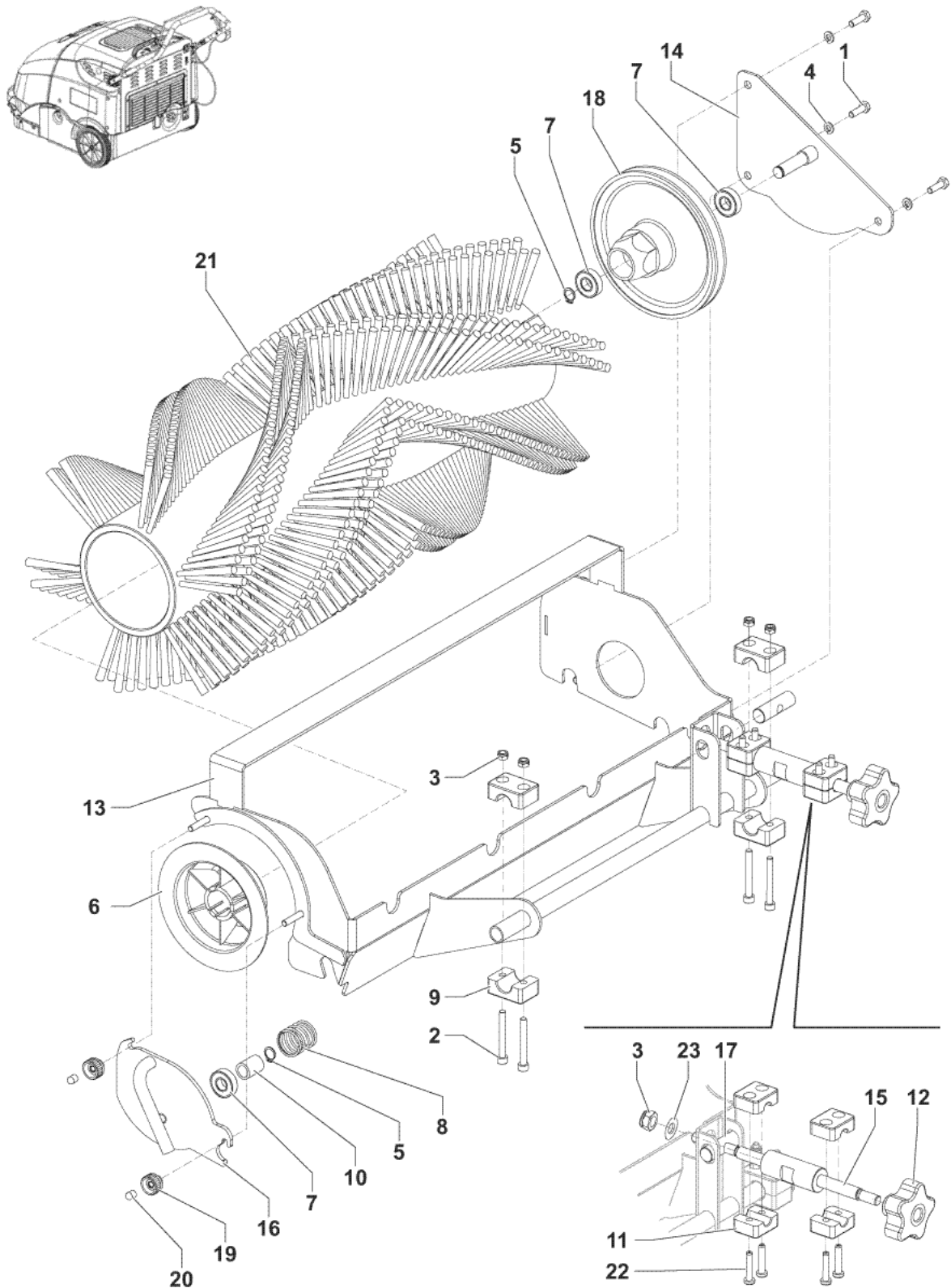
[1] - NOT SHOWN



Pos.	Artikel-Nr.	Menge	Variante	Notes
1		2	K1	
2		1	K1	
3-5	1466077000	1	SHAFT TRACTION WHEELS KIT	[1]
4		1	K1	
6		2	K1	
7		1	K1	
8	1466077000	1	SHAFT TRACTION WHEELS KIT	
9		2	K1	
10		2	K1	
K1	1465469000	1	HARDWARE WHEELS KIT	[2]

Part Notes:

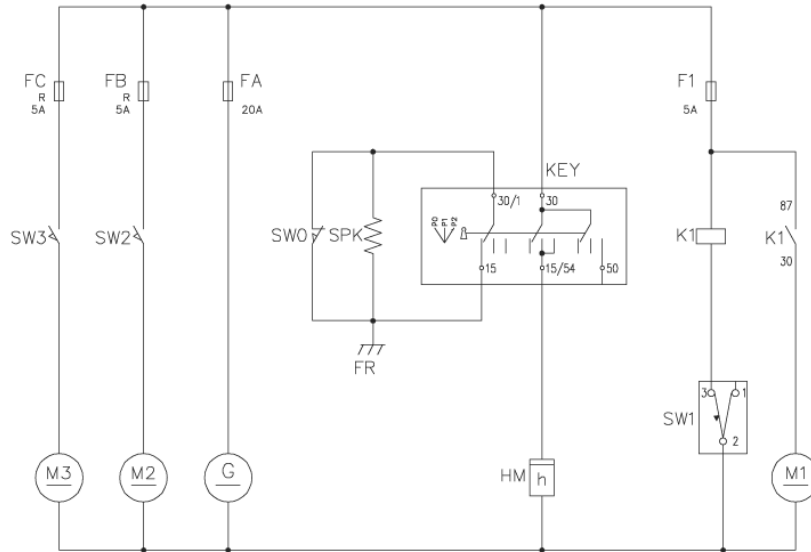
- [1] - SEE TSB-FC-2014-039
- [2] - NOT SHOWN



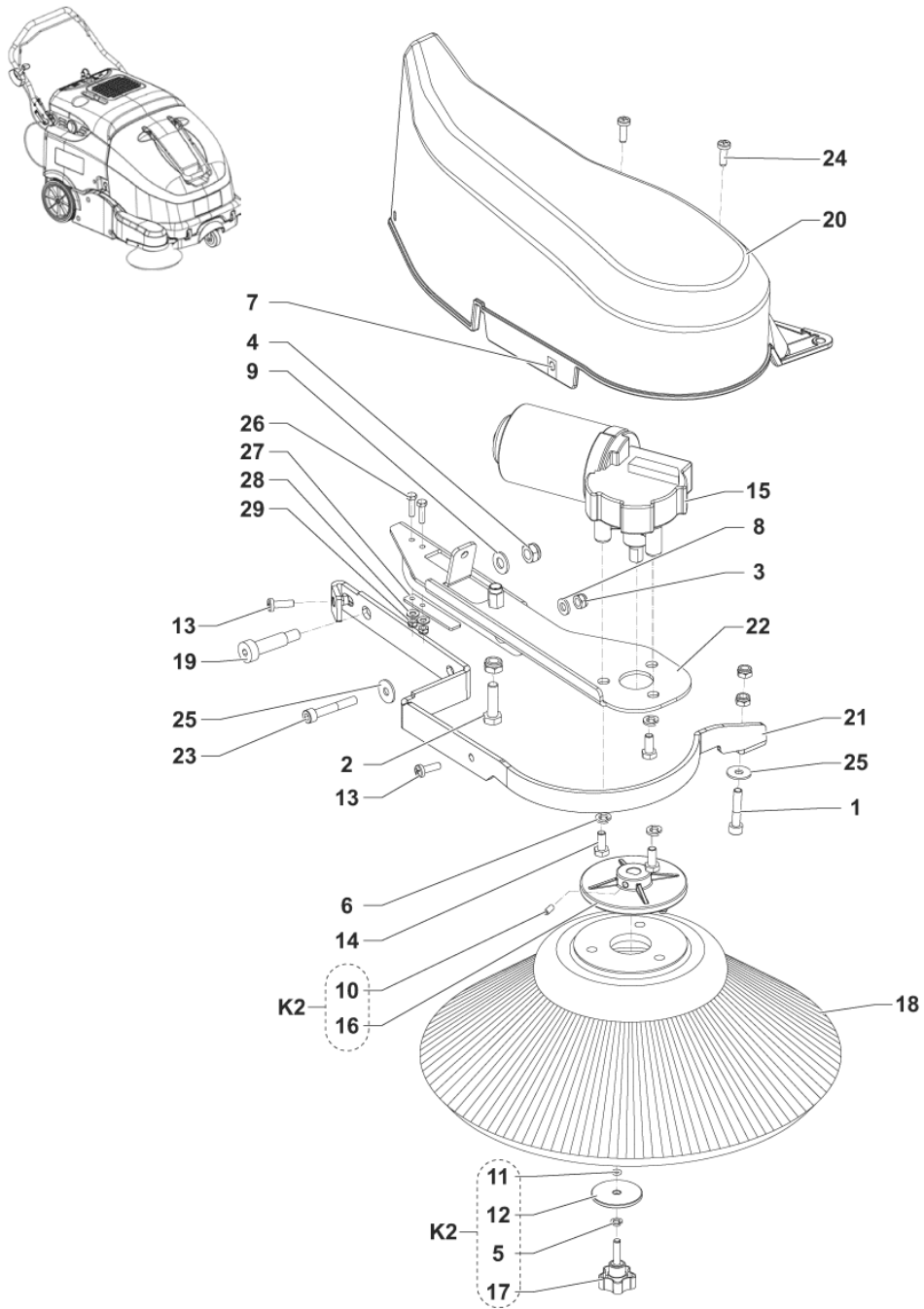
Pos.	Artikel-Nr.	Menge	Variante	Notes
1		3	K1	
2		4	K1	
3		5	K1	
4		3	K1	
5		2	K1	
6	145 0269 000	1	Bürstenklaue SW850 links	
7	44905699	3	BEARING BALL 6001 2RS PKD	
8		1	K1	
9		2	K1	
10		1	K1	
11		2	K1	
12	1464476000	1	KNOB LOBES M10 F. W/YELLOW CAP	
13	1465487000	1	SUPPORT MAIN BROOM	
14	1465489000	1	SUPPORT BROOM PULLEY	
15	1464689000	1	SCREW BROOM ADJUSTMENT	
16	1464695000	1	SUPPORT IDLE HUB	
17		1	K1	
18	1464746000	1	PULLEY MAIN BROOM	
19	1464885000	2	KNOB M6 D.20 PLASTIC	
20		2	K1	
21	1465215000	1	Kehrwalze PP 0,5-0,8 265x600 mm	
21	1466493000	1	BROOM MAIN 265X620 10R PPL 0.3-0.5 PKD	[1]
21*	1465216000	1	Kehrwalze PP Mix 5 265x600 mm	[2]
21*	146 0750 000	1	Kehrwalze 265x600 mm, Stahlmix	[2]
22		4	K1	
23		1	K1	
K1	1465470000	1	HARDWARE MAIN BROOM KIT	[3]

Part Notes:

- [1] - STARTING MACHINE S.No 3810152500016 - SEE TSB-FC-2015-014  
DE TSB-FC-2015-014 SW900 Floortec 760 neue Schürzen
- [2] - OPTION
- [3] - NOT SHOWN



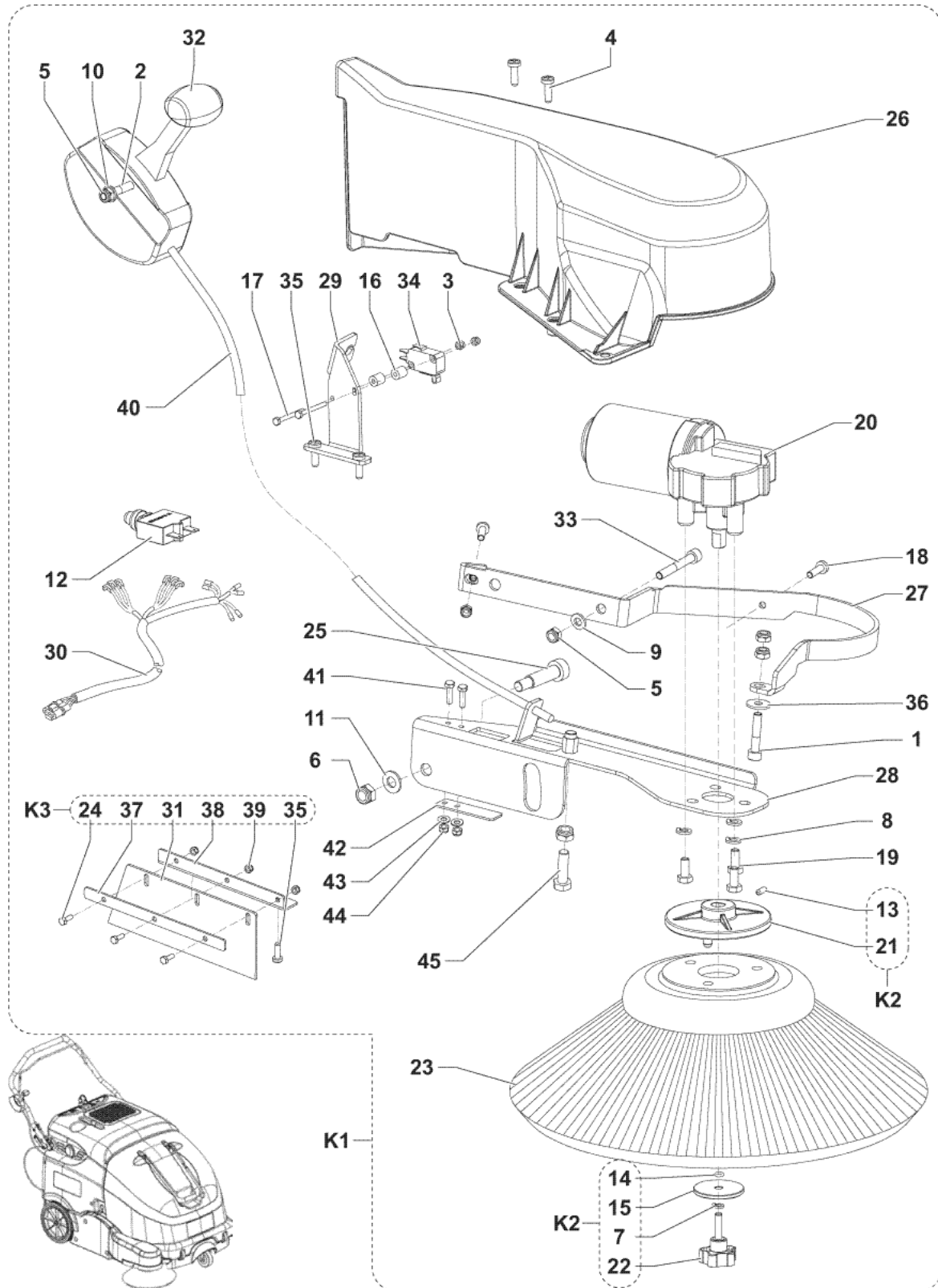
Pos.	Artikel-Nr.	Menge	Variante	Notes
F1	145 9853 000		Sicherung 15A	
FA	146 1776 000		Sicherung 20A	
FB	1465605000		CIRCUIT BREAKER 5A KIT	
FC	1465605000		CIRCUIT BREAKER 5A KIT	
FR				
G	1464756000		DINAMOTOR MP80 12V 200 W	
HM	9096951000		Betriebsstundenzähler 24V	
K1	9098441000		Relais 12V	
KEY	33020442		Schlüsselschalter	
M1	146 0527 000		Filterrüttelmotor f.	
M2	1465999000		REDUCTION GEARMOTOR 40W 12V PKD	
M3	1465999000		REDUCTION GEARMOTOR 40W 12V PKD	
SPK	146 0822 000		Zündkerze	
SW0	1466506000		MICROSWITCH 10A 250V PKD	
SW1	1465465000		SWITCH KIT	
SW2	9100000792		MICROSWITCH 16A 250V PKD	
SW3	9100000792		MICROSWITCH 16A 250V PKD	



Pos.	Artikel-Nr.	Menge	Variante	Notes
1		1	K1	
2		1	K1	
3		3	K1	
4		2	K1	
5		1	K2	
6		3	K1	
7		1	K1	
8		1	K1	
9		1	K1	
10		1	K2	
11		1	K2	
12		1	K2	
13		2	K1	
14		3	K1	
15	1465999000	1	REDUCTION GEARMOTOR 40W 12V PKD	
16		1	K2	
17		1	K2	
18	146 3035 000	1	Seitenbesen 109x315 mm, PP 0,5	
18*	146 3036 000	1	Seitenbesen 145x300 mm, Nylon	[1]
19		1	K1	
20	1464675000	1	Abdeckung Bürste rechts	
21	1465497000	1	BUMPER RIGHT BROOM	
22	1465011000	1	SUPPORT RIGHT SIDE BROOM	
23		1	K1	
24		2	K1	
25		2	K1	
26		2	K1	
27		1	K1	
28		2	K1	
29		2	K1	
K1	1465471000	1	HARDWARE SIDE BROOM KIT	[2]
K2	1463865000	1	Schraube SB SW 750	

## Part Notes:

- [1] - OPTION  
[2] - NOT SHOWN



## LEFT BROOM (OPTIONAL)

FLOORTEC 760 P ALT

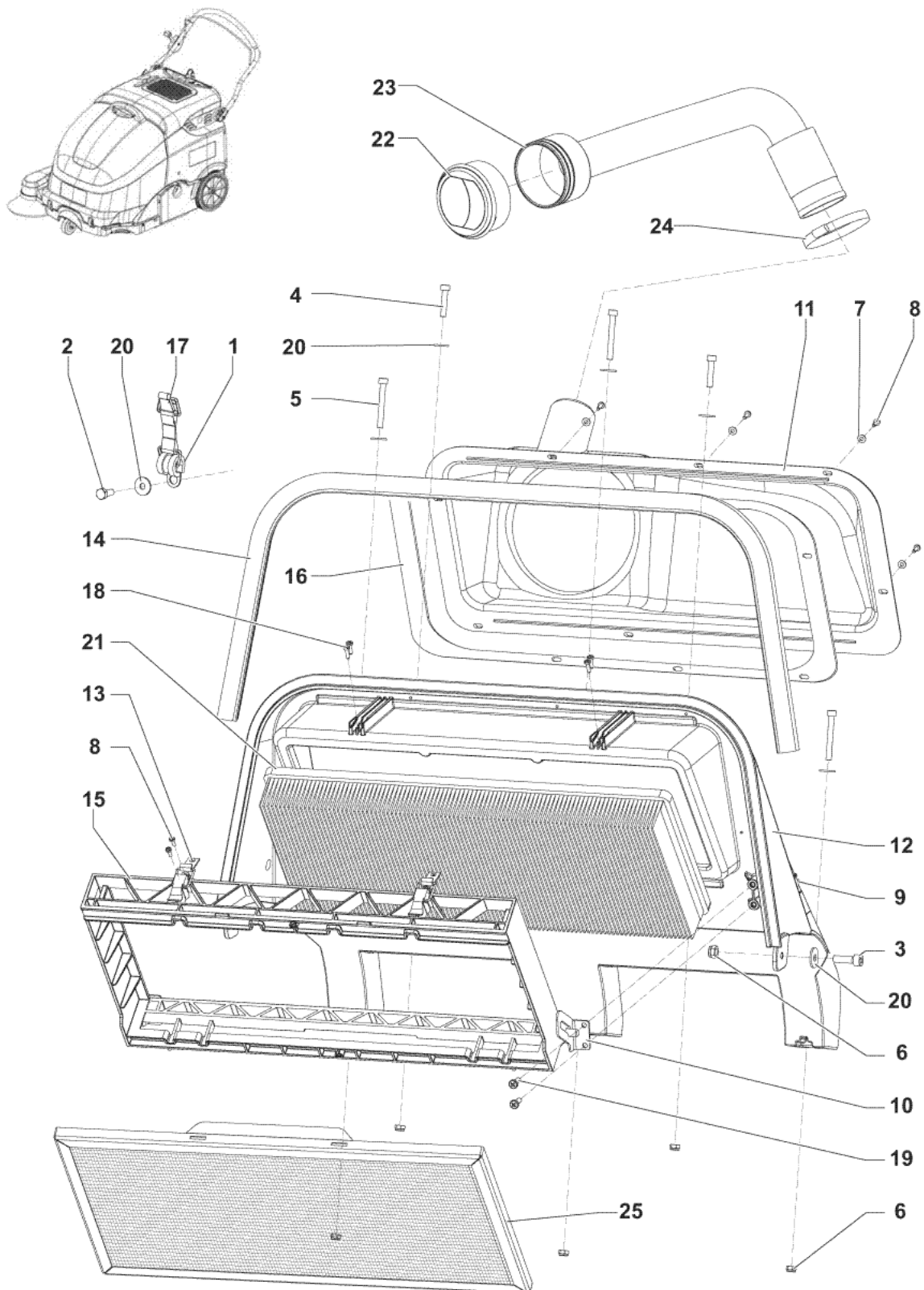
2015.05.19

2016.03.01

Pos.	Artikel-Nr.	Menge	Variante	Notes
1		1	K4	
2		1	K4	
3		2	K4	
4		2	K4	
5		4	K4	
6		2	K4	
7		1	K2	
8		3	K4	
9		1	K4	
10		2	K4	
11		1	K4	
12	1465605000	1	CIRCUIT BREAKER 5A KIT	
13		1	K2	
14		1	K2	
15		1	K2	
16		2	K4	
17		2	K4	
18		2	K4	
19		3	K4	
20	1465999000	1	REDUCTION GEARMOTOR 40W 12V PKD	
21		1	K2	
22		1	K2	
23	146 3035 000	1	Seitenbesen 109x315 mm, PP 0,5	
23*	146 3036 000	1	Seitenbesen 145x300 mm, Nylon	
24		3	K3	
25		1	K4	
26	1464676000	1	COVER LEFT SIDE BROOM	
27	1465498000	1	BUMPER LEFT BROOM	
28	1465012000	1	SUPPORT LEFT SIDE BROOM	
29	1465014000	1	SUPPORT LEFT SIDE BROOM SWITCH	
30	1465142000	1	HARNES LEFT BROOM	
31		1	K3	
32	1465183000	1	LEVER LEFT SIDE BROOM CONTROL	
33		1	K4	
34	9100000792	1	MICROSWITCH 16A 250V PKD	
35		4	K3-K4	
36		2	K4	
37		1	K3	
38		1	K3	
39		3	K3	
40	1465532000	1	CABLE FOR SIDE BROOM LEVER	
41		2	K4	
42		1	K4	
43		2	K4	
44		2	K4	
45		1	K4	
K1*	1465408000	1	Seitenbesen-Set, links, PP	[1]
K1*	1466497000	1	BROOM LEFT SIDE PPL W/RECYCLING KIT	[2]
K2	1463865000	1	Schraube SB SW 750	
K3	1465595000	1	SKIRTS RECYCLING KIT	[3]
K3	1466489000	1	SKIRT RECYCLING LT SIDE KIT	[4]
K4	1465471000	1	HARDWARE SIDE BROOM KIT	[5]

## Part Notes:

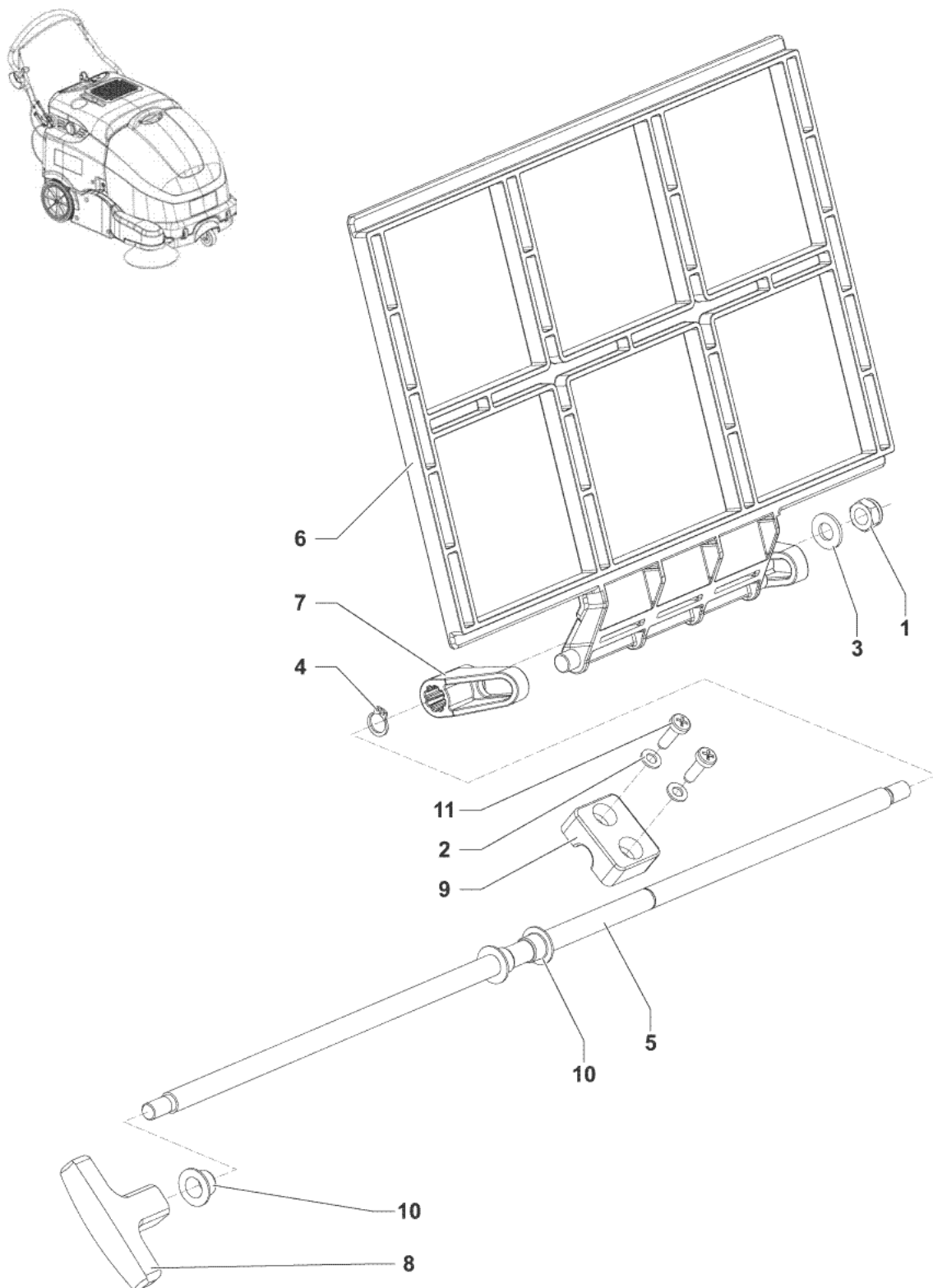
- [1] - OPTION - INSTALLATION INSTRUCTION REF. 1465407000
- [2] - STARTING MACHINE S.No 3810152500016 - SEE TSB-FC-2015-014- INST. INSTR. 1466499000
- [3] - UNTIL MACHINE S.No 3810152500015
- [4] - STARTING MACHINE S.No 3810152500016 - SEE TSB-FC-2015-014- INST. INSTR. 1466485000
- [5] - NOT SHOWN



Pos.	Artikel-Nr.	Menge	Variante	Notes
1	33003435	1	DOUBLE COLLAR D5	
2		1	K1	
3		2	K1	
4		2	K1	
5		3	K1	
6		8	K1	
7		8	K1	
8		12	K1	
9		2	K1	
10		2	K1	
11		1	K1	
12		1	K1	
13	1464884000	2	LOCK LEVER	
14	1465610000	1	GASKET BULB REINFORCED L.1070MM PKD	
15	1465146000	1	FRAME FOR PANEL FILTER	
16	1465517000	1	GASKET FOR CONVEYOR	
17	1465525000	1	LATCH RUBBER	
18		4	K1	
19		4	K1	
20		9	K1	
21	1464902000	1	Filter Papier	
21*	1464691000	1	Filter Polyester	[1]
22	33010103	1	Düse (Lüftung)	
23	1464887000	1	HOSE WET BY-PASS	
24	145 0543 000	1	Schlauchklemme 14/32-52	
25*	1465018000	1	Vorfilter	[1]
[K1]	1465472000	1	SUPPORT FILTER KIT	[2]

Part Notes:

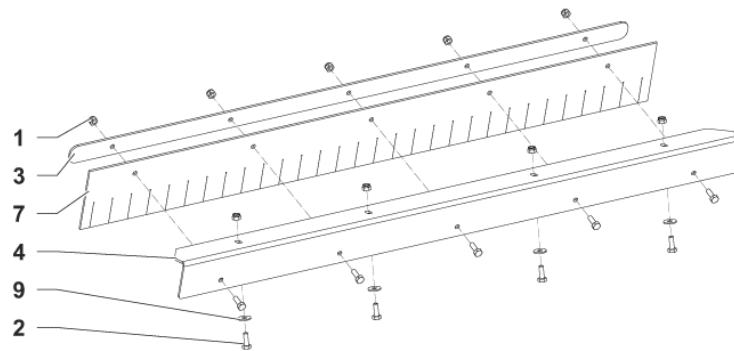
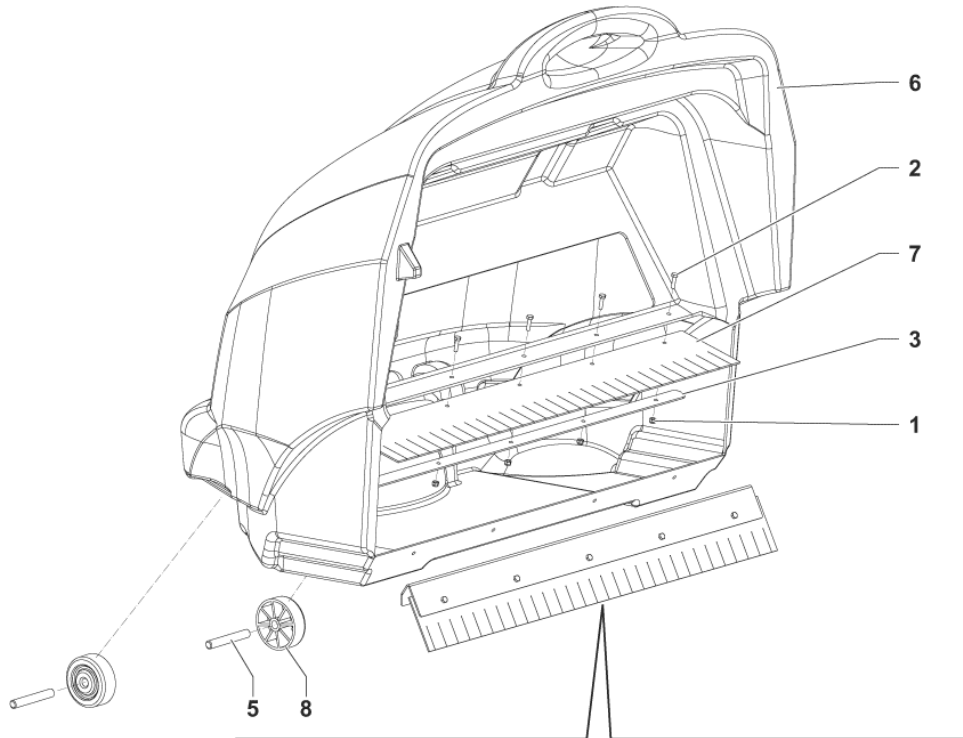
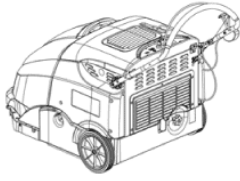
- [1] - OPTION
- [2] - NOT SHOWN



Pos.	Artikel-Nr.	Menge	Variante	Notes
1		1	K1	
2		2	K1	
3		1	K1	
4		1	K1	
5	1465028000	1	ROD FILTER SHAKER	
6	1465029000	1	RAKE FILTER SHAKER	
7	1465030000	2	DRAGGER FILTER SHAKER	
8	1465103000	1	HANDLE M8 PLASTIC	
9		1	K1	
10		3	K1	
11		2	K1	
[K1]	1465479000	1	HARDWARE MANUAL FILTER SHAKER KIT	[1]
[K2]	1465480000	1	Filterrüttler Set manuell	[1]

Part Notes:

[1] - NOT SHOWN



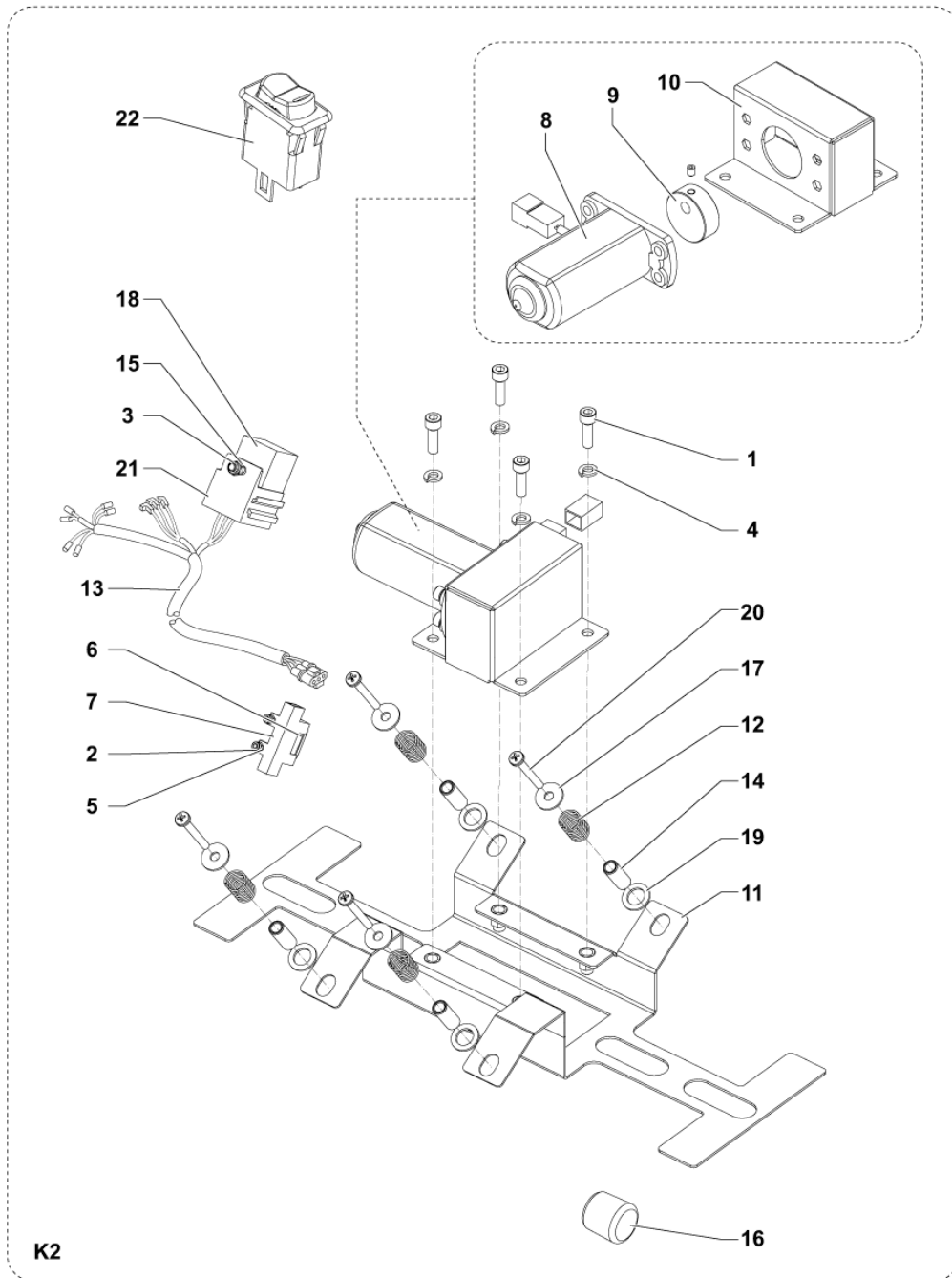
Pos.	Artikel-Nr.	Menge	Variante	Notes
1		14	K1	
2		14	K1	
3		2	K1	
4		1	K1	
5	1464997000	2	PIN D.9.5X70	
6	1465149000	1	CONTAINER WASTE BLUE	
7	1465476000	1	SKIRTS WASTE CONTAINER KIT	
8	L08602460	2	Ablenkrolle BA 430 S	
9		9	K1	
[K1]	1465475000	1	HARDWARE WASTE CONTAINER KIT	[1]

Part Notes:

[1] - NOT SHOWN



Pos.	Artikel-Nr.	Menge	Variante	Notes
NW	1465215000	1	Kehrwalze PP 0,5-0,8 265x600 mm	
NW	1465463000	1	SKIRTS KIT	
NW	146 3035 000	1	Seitenbesen 109x315 mm, PP 0,5	
OM	1465610000	1	GASKET BULB REINFORCED L.1070MM PKD	
OM	1464691000	1	Filter Polyester	
OM	1464756000	1	DINAMOTOR MP80 12V 200 W	
OM	1464433000	1	Kohlebürsten-Kit (4St.)	
OM	1464687000	1	BELT XPZ 912	
OM	146 0767 000	1	Keilriemen XPZ 1162SW 700S	
OM	1464045000	1	Riemenkit	
OM	44905699	3	BEARING BALL 6001 2RS PKD	
OM	909 6602 000	1	Lenkrolle	
OM	1465999000	1	REDUCTION GEARMOTOR 40W 12V PKD	
OM	1464908000	1	CABLE TRACTION	
OM	146 0823 000	1	Lufffilter	
OM	146 0822 000	1	Zündkerze	
OM	146 0824 000	1	Vorfilter	
EM	1465146000	1	FRAME FOR PANEL FILTER	
EM	1464884000	2	LOCK LEVER	
EM	1464725000	1	REDUCTION GEAR COMPLETE	
EM	1466521000	1	GEAR SPUR PLASTIC 150P 50T PKD	
EM	1466522000	1	GEAR SPUR PLASTIC 42P 14T PKD	
EM	145 1123 000	3	Lager YAT204	
EM	1464719000	2	SPRING TORSION 2.8X24	
EM	1464476000	1	KNOB LOBES M10 F. W/YELLOW CAP	
EM	9100000792	1	MICROSWITCH 16A 250V PKD	
EM	1466506000	1	MICROSWITCH 10A 250V PKD	
EM	1465017000	1	LEVER RIGHT SIDE BROOM CONTROL	
EM	1465532000	1	CABLE FOR SIDE BROOM LEVER	
EM	146 1318 000	4	Silentbloc zu SW 700 SP	



Pos.	Artikel-Nr.	Menge	Variante	Notes
1		4	K1	
2		2	K1	
3		1	K1	
4		4	K1	
5		2	K1	
6	145 9852 000	1	FUSE BLADE 5A UL	
7	146 0660 000	1	Halter zu Sicherung BA-	
8	146 0527 000	1	Filterrüttelmotor f.	
9	145 8376 000	1	Nocke	
10	1466335000	1	BRACKET FILTER SHAKER PKD	
11		1	K1	
12		4	K1	
13	1465143000	1	HARNESS FILTER SHAKER	
14		4	K1	
15		1	K1	
16		1	K1	
17		4	K1	
18	9098441000	1	Relais 12V	
19		4	K1	
20		4	K1	
21	33009104	1	RELAY SUPPORT	
22	1465465000	1	SWITCH KIT	
[K1]	1465473000	1	HARDWARE EL. FILTER SHAKER KIT	[1]
K2*	1465474000	1	Filterrüttler Set	[2]

## Part Notes:

- [1] - NOT SHOWN  
 [2] - OPTION - INSTALLATION INSTRUCTIONS REF. 1465627000



Pos.	Artikel-Nr.	Menge	Variante	Notes
	1465541000	1	Seitenschürzen-Set, n. mark.	
	9096951000	1	Betriebsstundenzähler 24V	
	1465216000	1	Kehrwalze PP Mix 5 265x600 mm	
	146 0750 000	1	Kehrwalze 265x600 mm, Stahlmix	
	146 3036 000	1	Seitenbesen 145x300 mm, Nylon	
	1465408000	1	Seitenbesen-Set, links, PP	
	1464691000	1	Filter Polyester	
	1465018000	1	Vorfilter	
	1465474000	1	Filterrüttler Set	



## heupel Reinigungstechnik GmbH

Gottlieb Daimler Str. 6  
88214 Ravensburg

Tel: (049) 0751 - 35905-3  
Fax: (049) 0751 - 35905-59

email: [info@heupel-gmbh.de](mailto:info@heupel-gmbh.de)  
[www.heupel-gmbh.de](http://www.heupel-gmbh.de)

**Shop: [www.heupel-shop.de](http://www.heupel-shop.de)**

Heupel - Reinigungstechnik - Beratung, Verkauf, Service, alles aus einer Hand.

