

FLOORTEC 550B

Model:
FLOORTEC 550 B



heupel Reinigungstechnik GmbH

Gottlieb Daimler Str. 6
88214 Ravensburg

email: info@heupel-gmbh.de
www.heupel-gmbh.de

Tel: (049) 0751 - 35905-3

Fax: (049) 0751 - 35905-59

Shop: www.heupel-shop.de

Heupel - Reinigungstechnik - Beratung, Verkauf, Service, alles aus einer Hand.



Nilfisk ALTO

Why Compromise

www.nilfisk-alto.com

Table of Contents

FLOORTEC 550B

Chassis	3
Main broom assy	5
Side broom assy	7
Drive wheel assy	9
Hopper system	11
Transmission system	13
Belt tensioner assy	15
Reduction motor assy	17
Dust control system	19
Handle system	21
Control panel	23
Hub assy - left & right	25
Decals	27
Electrical parts	29
Battery charger	31
Wear - maintenance parts	33
Options	35

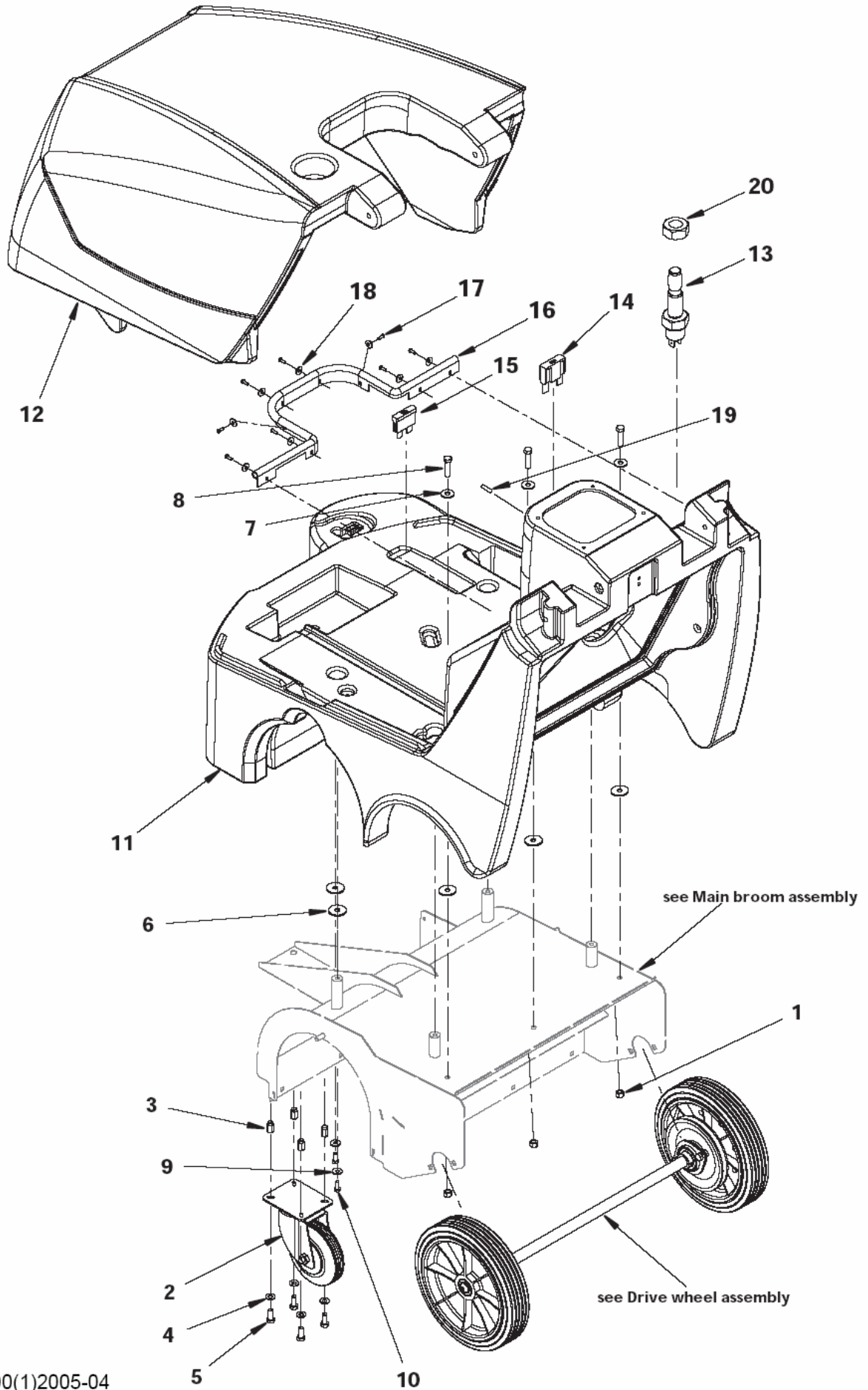
Chassis

FLOORTEC 550B

10-07-2009

Part List ID
550B01

3



Chassis

FLOORTEC 550B

10-07-2009

Part List ID
550B01

4

Pos	Part no.	Qty	Description	EAN
1	33005607	3	NUT SELF L. M8 UNI7474	5711140066
2	145 5115 000	1	CASTOR	5711140027
2	146 0569 000	1	WHEEL, CASTOR WITH BRAKE OPTIONAL	5715492038
3	145 6133 000	4	INSERT M8	5711140031
4	33005915	4	WASHER M8 UNI6592	5711140067
5	33005444	4	SCREW M8X20 UNI5739 GALVANIZED	5711140065
6	145 9171 000	5	WASHER 8X32X2.5 UNI6593	5711140022
7	L08300000	3	WASHER 8X24 UNI6592	5711140012
8	33003997	3	SCREW M8X35 UNI5739	5711140062
9	L08228600	2	WASHER 6X18 UNI6592	5711140012
10	33003974	2	SCREW M6X16 UNI5739	5711140062
11	146 2324 000	1	CHASSIS ROTOMOLDED	5711140043
12	146 2325 000	1	HOOD ROTOMOLDED	5711140043
13	146 0565 000	1	SWITCH. HOOD SAFETY	5711140032
14	909 6218 000	1	FUSE 60A	5711140126
15	145 9853 000	1	FUSE 15A	5711140009
16	146 0662 000	1	GASKET	5711140033
17	146 0669 000	8	SCREW 4X12	5711140033
18	145 1261 000	8	WASHER 5X15X1.5 UNI6593	5711140022
19	145 4260 000	1	CAP D.14.7	5711140011
20	146 0637 000	1	NUT HEX M14 UNI5589	5711140033

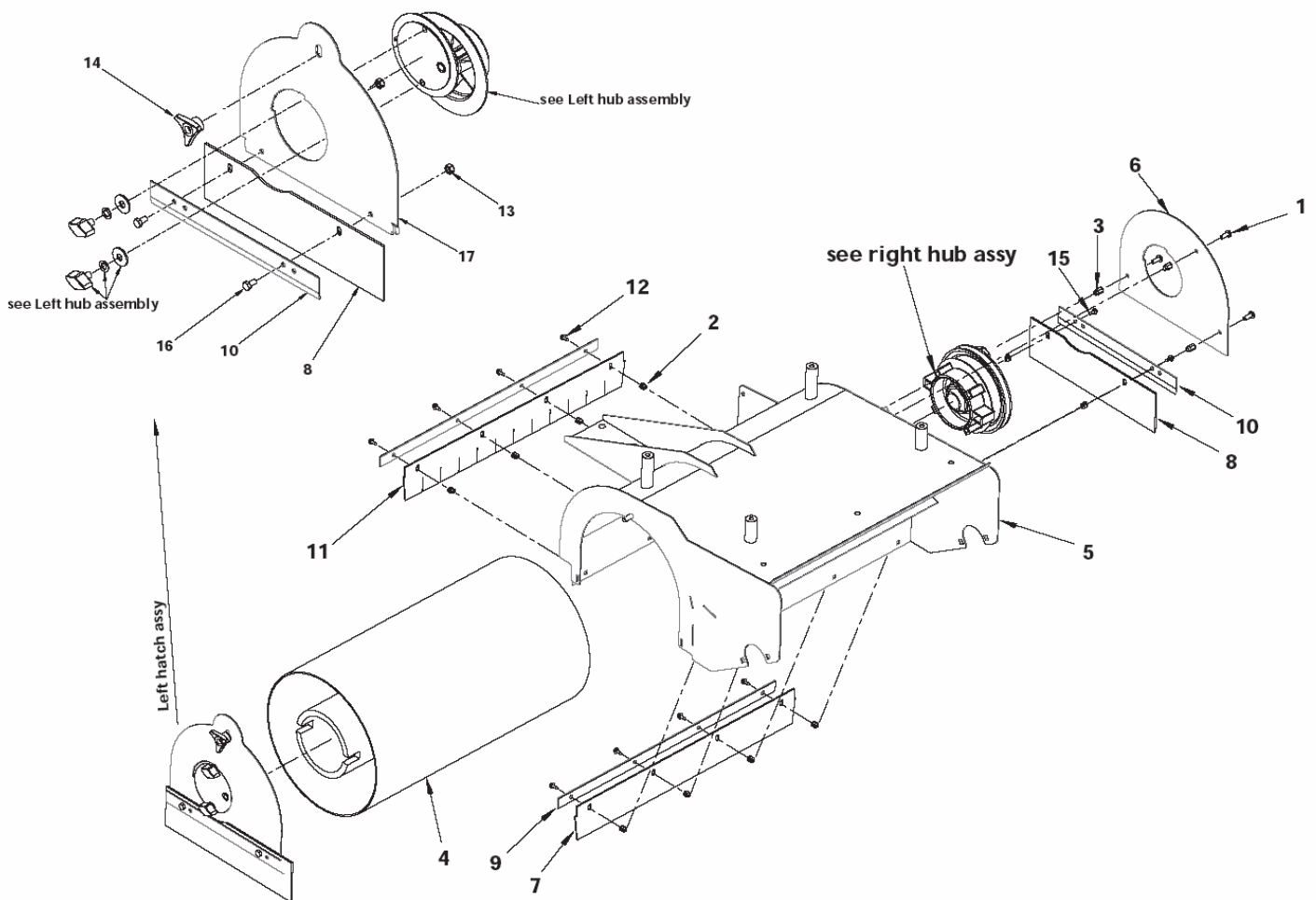
Main broom assy

FLOORTEC 550B

10-07-2009

Part List ID
550B03

5



Main broom assy

FLOORTEC 550B

10-07-2009

Part List ID
550B03

6

Pos	Part no.	Qty	Description	EAN
1	L08812095	3	SCREW M6X16 UNI7687	5711140017
2	145 4652 000	1	SCREW NUT	5711140025
3	145 4772 000	3	INSERT M6	5711140026
4	145 4792 000	1	BROOM MAIN 265X500 PPL 0,7	5715492038
4	145 4973 000	1	BROOM MAIN 265X500 STEEL MIX OPTION	5715492038
4	145 4974 000	1	BROOM MAIN 265X500 NATURAL FIBRE OPTION	5715492038
5	146 0551 000	1	SUPPORT MAIN BROOM	5711140032
6	146 2329 000	1	HATCH RIGHT MAIN BROOM	5711140043
7	146 0554 000	1	SKIRT FRONT/REAR NEOPRENE BLACK	5715492038
8	146 0555 000	2	SKIRT SIDE	5711140032
8	146 0587 000	2	SKIRT SIDE NON MARKING OPTION	5715492038
9	146 2330 000	2	PLATE FRONT SKIRT	5711140043
10	146 2331 000	2	PLATE SIDE SKIRT	5711140043
11	146 0586 000	2	SKIRT FRONT NON MARKING OPTION	5715492038
11	146 0628 000	1	SKIRT FRONT SOFT	5715492038
12	146 0633 000	9	SCREW 3.9X13	5711140033
13	L08603682	2	NUT SELF L. M6 UNI7474	5711140015
14	145 5035 000	1	KNOB M8	5711140012
15	146 2085 000	1	SCREW 3.9X13	5711140042
16	33003972	2	SCREW M6X12 UNI5739	5711140062
17	146 2326 000	1	HATCH LEFT MAIN BROOM	5711140043

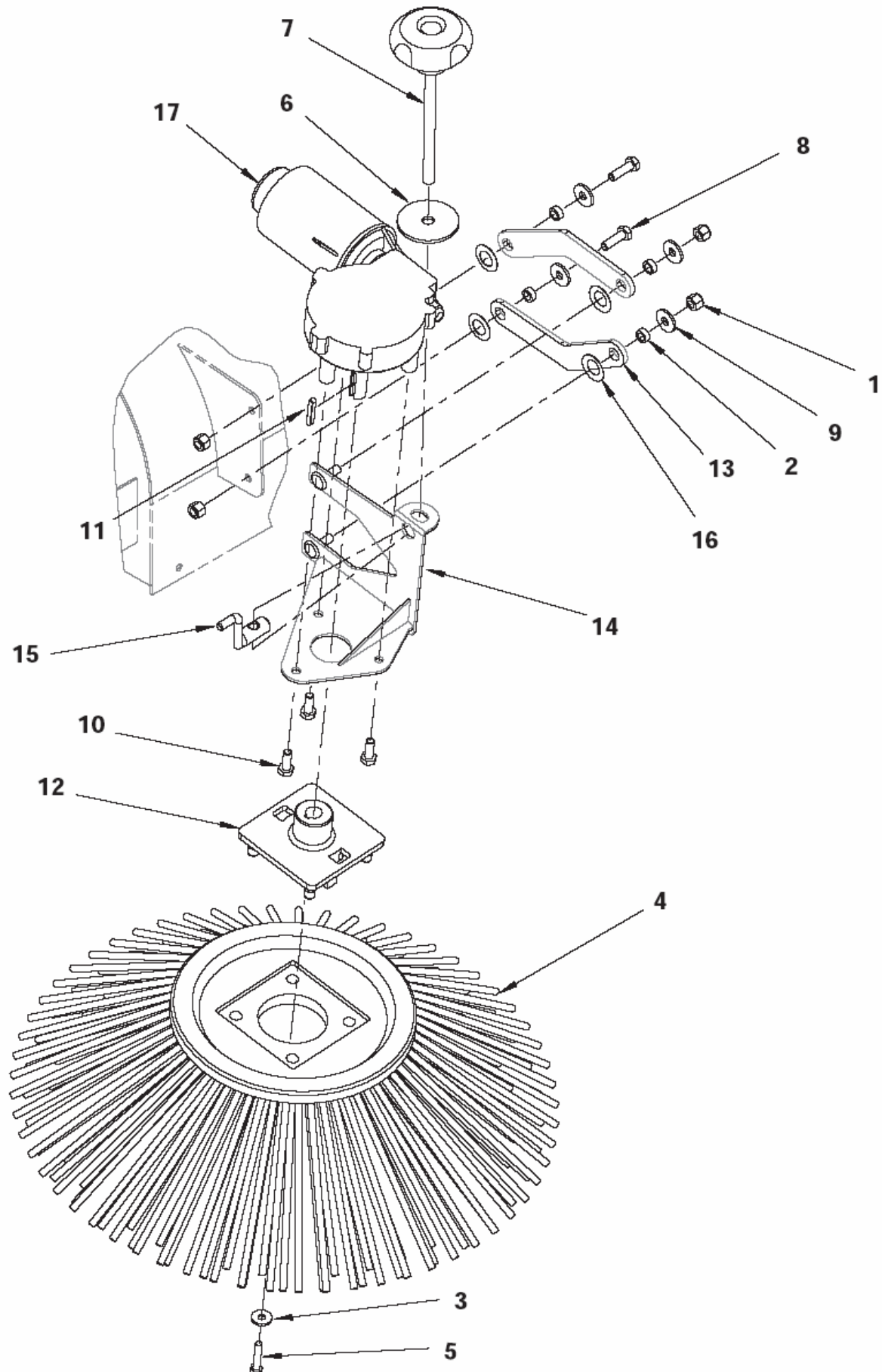
Side broom assy

FLOORTEC 550B

10-07-2009

Part List ID
550B05

7



Side broom assy

FLOORTEC 550B

10-07-2009

Part List ID
550B05

8

Pos	Part no.	Qty	Description	EAN
1	33005562	4	NUT SELF L. M6 UNI7473	5711140066
2	145 1252 000	4	SPACER 6.5X10X5	5711140004
3	145 1261 000	1	WASHER 5X15X1.5 UNI6593	5711140022
4	145 1899 000	1	BROOM SIDE 180X420 PPL 0,8	5715492038
4	145 4959 000	1	BROOM SIDE 180X420 STEEL MIX OPTION	5715492038
4	145 4976 000	1	BROOM SIDE 180X420 NATURAL FIBRE OPTION	5715492038
4	146 0678 000	1	BRUSH SIDE 180X347 NYLON OPTION	5715492038
5	33003964	1	SCREW M5X25 UNI5739	5711140061
6	146 1488 000	1	WASHER 9X45X3 UNI6592	5711140039
7	145 8455 000	1	KNOB M8X112	5711140012
8	33003975	2	SCREW M6X20 UNI5739	5711140062
9	L08228600	4	WASHER 6X18 UNI6592	5711140012
10	33003974	3	SCREW M6X16 UNI5739	5711140062
11	145 9777 000	1	KEY 4X4X25 UNI6604A	5711140023
12	146 0519 000	1	HUB SIDE BROOM	5711140032
13	146 0558 000	2	ARM SIDE BROOM	5711140032
14	146 0559 000	1	BRACKET BROOM	5711140032
15	146 0560 000	1	HOOK SIDE BROOM	5711140032
16	146 0617 000	4	BELLEVILLE WASHER	5711140033
17	146 0532 000	1	REDUCTION GEARMOTOR36-42W 12V	5711140032

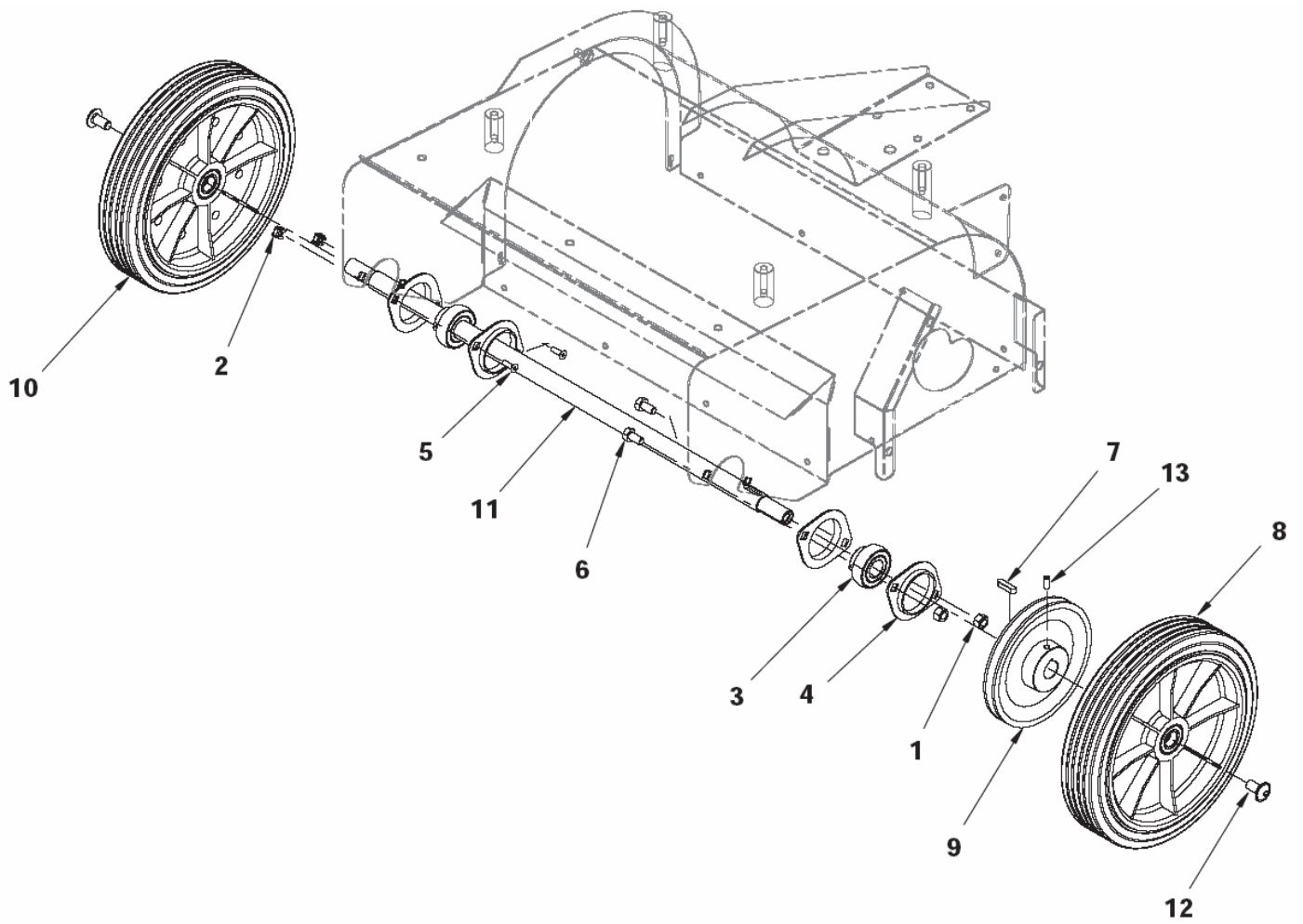
Drive wheel assy

FLOORTEC 550B

10-07-2009

Part List ID 550B07

9



Drive wheel assy

FLOORTEC 550B

10-07-2009

Part List ID

550B07

10

Pos	Part no.	Qty	Description	EAN
1	33005607	2	NUT SELF L. M8 UNI7474	5711140066
2	145 0497 000	2	NUT M5	5711140022
3	145 1123 000	2	BALL BEARING YAT204	5711140002
4	145 8543 000	2	SUPPORT	5711140001
5	33004563	2	SCREW M5X16 UNI5933	5711140064
6	33003993	2	SCREW M8X16 UNI5739	5711140062
7	145 9899 000	1	KEY 6X6X25 UNI6604A	5711140023
8	146 0513 000	1	WHEEL RIGHT	5711140032
9	146 0517 000	1	PULLEY D.140	5711140032
10	146 0518 000	1	WHEEL LEFT	5711140032
11	146 0533 000	1	SHAFT	5711140032
12	146 0582 000	2	SCREW M10X20 ISO7380FLA	5711140033
13	146 0640 000	1	SCREW GRUB M6X14 UNI5929	5711140033

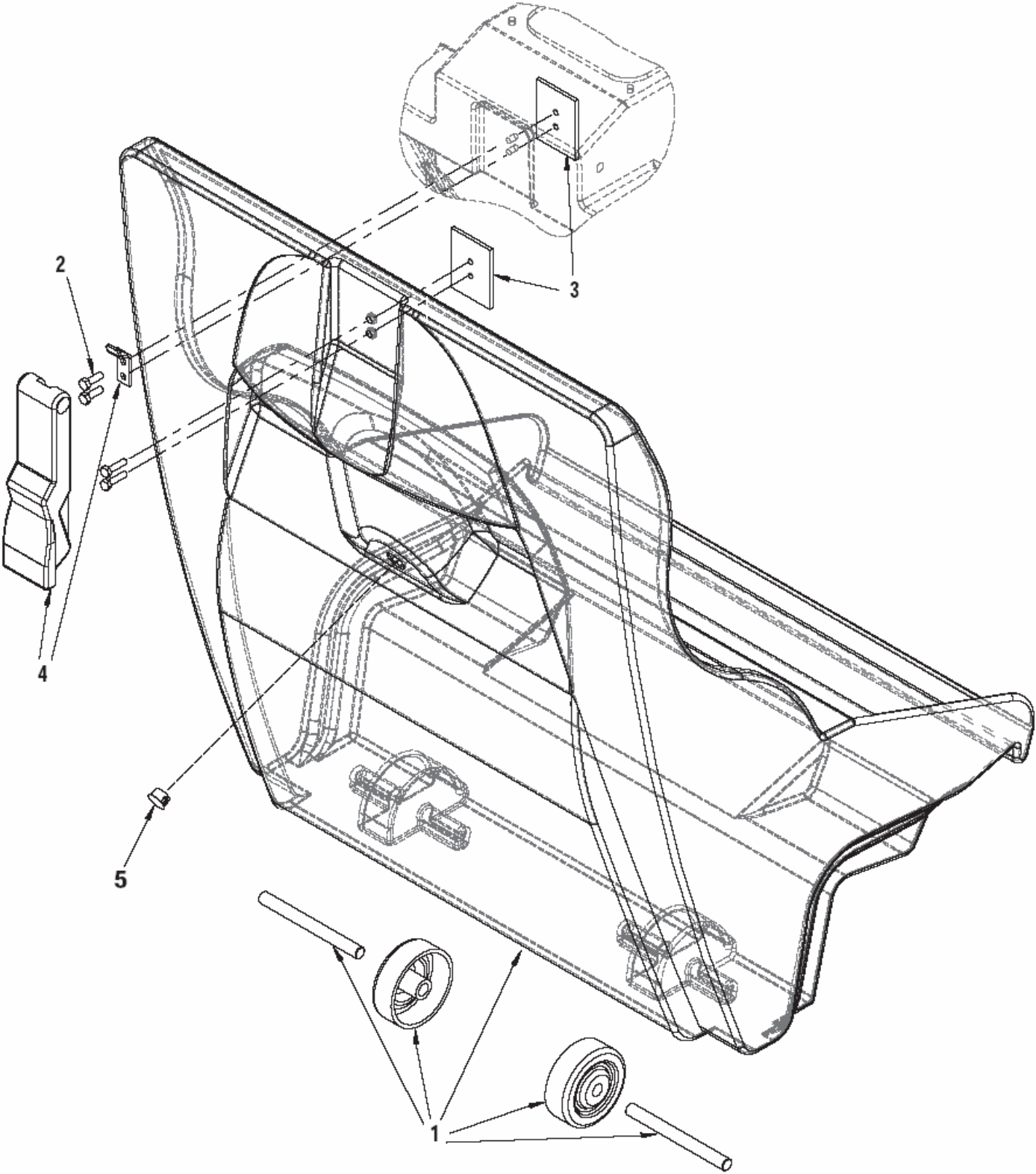
Hopper system

FLOORTEC 550B

10-07-2009

Part List ID
550B09

11



Hopper system

FLOORTEC 550B

10-07-2009

Part List ID

550B09

12

Pos	Part no.	Qty	Description	EAN
1	146 2322 000	1	CONTAINER DIRT ROTOMOLDED	5711140043
2	33003963	4	SCREW M5X20 UN15739	5711140061
3	146 0562 000	2	PLATE	5711140032
4	146 0520 000	1	HOOK RUBBER	5711140032
5	145 4259 000	1	CAP. BLACK D.11.9	5711140011

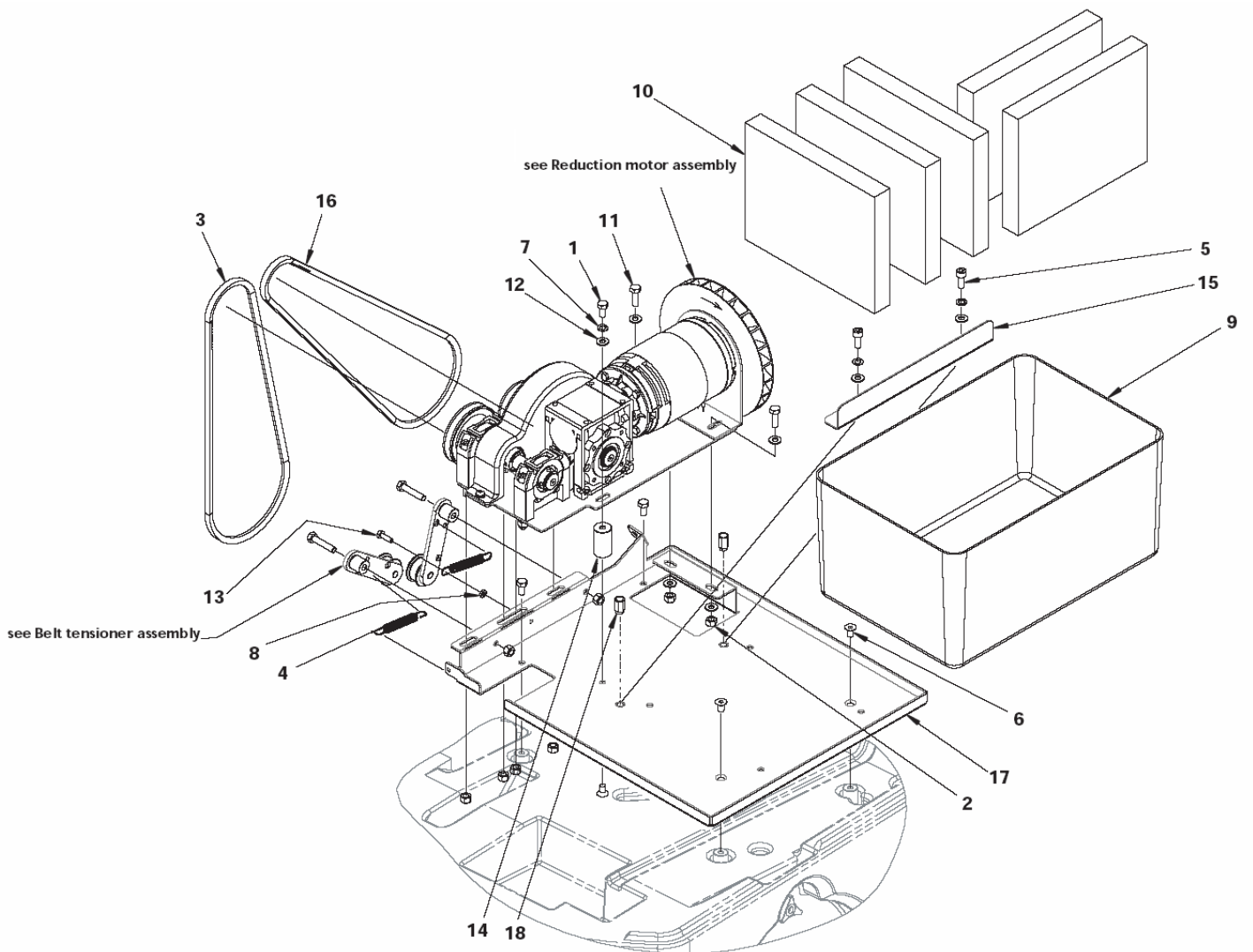
Transmission system

FLOORTEC 550B

10-07-2009

Part List ID
550B11

13



Transmission system

FLOORTEC 550B

10-07-2009

Part List ID

550B11

14

Pos	Part no.	Qty	Description	EAN
1	L08274300	3	SCREW M8X16 UNI5739	5711140012
2	33005607	2	NUT SELF L. M8 UNI7474	5711140066
3	146 0150 00	1	BELT	5711140031
4	145 0274 000	2	SPRING	5711140004
5	33004365	2	SCREW M8X20 UNI5931	5711140064
6	145 4487 000	3	SCREW M8X15 UNI5933	5711140021
7	33005842	3	WASHER M8 UNI1751B	5711140067
8	33005531	1	NUT HEX M6 UNI5589	5711140066
9	145 5252 000	1	CONTAINER BATTERY	5711140027
10	146 0668 000	5	PANEL INSULATING	5711140033
11	33005445	2	SCREW M8X25 UNI5739 GALVANIZED	5711140065
12	33005915	7	WASHER M8 UNI6592	5711140067
13	33003975	1	SCREW M6X20 UNI5739	5711140062
14	146 0515 000	1	SPACER	5711140032
15	146 0543 000	1	BRACKET BATTERY RETAINING	5711140032
16	146 0767 000	1	BELT	5711140033
17	146 0536 000	1	PLATE	5711140032
18	145 6133 000	2	INSERT M8	5711140031

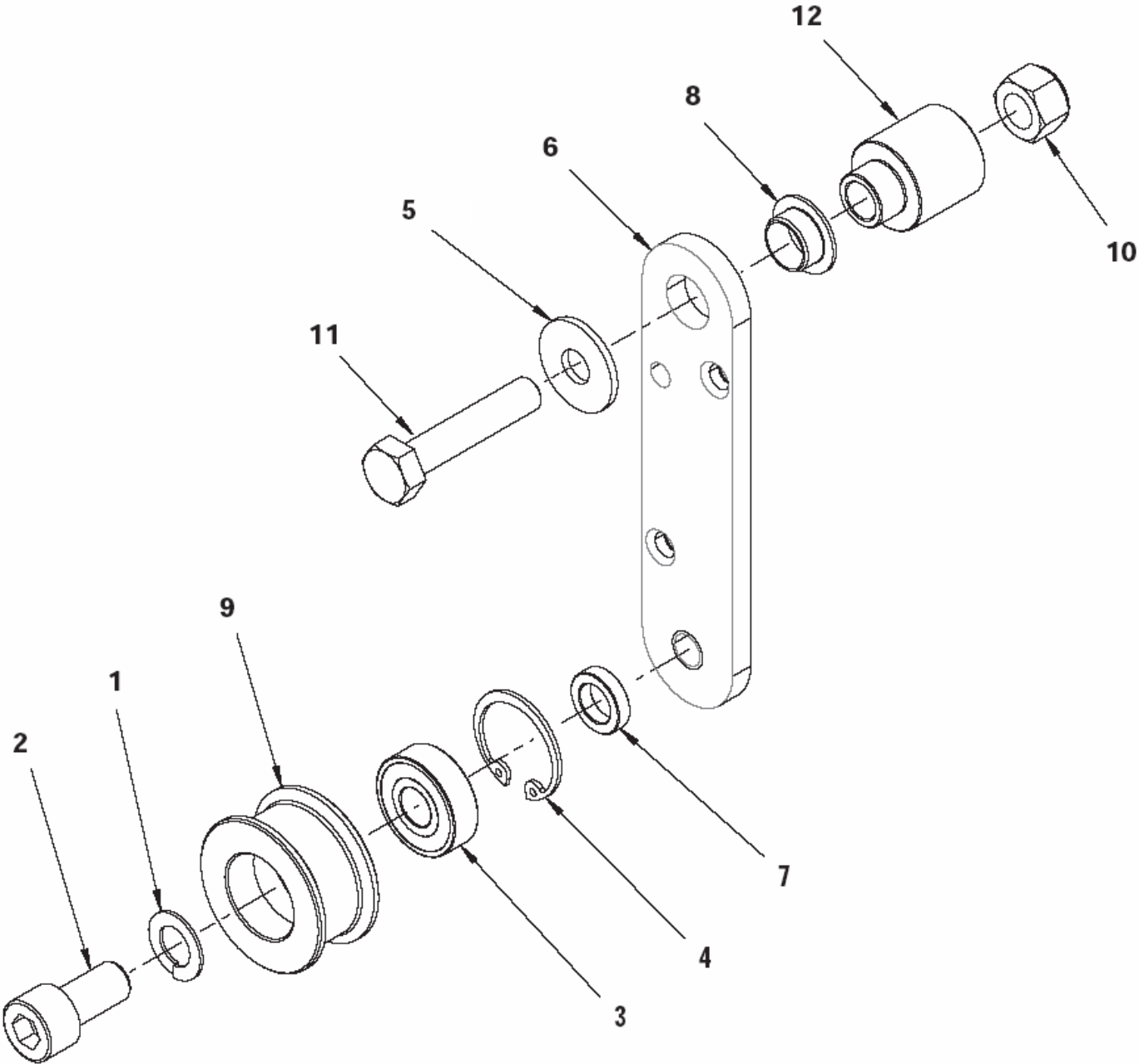
Belt tensioner assy

FLOORTEC 550B

10-07-2009

Part List ID
550B13

15



Belt tensioner assy

FLOORTEC 550B

10-07-2009

Part List ID
550B13

16

Pos	Part no.	Qty	Description	EAN
1	33005843	1	WASHER M10 UNI1751B	
2	145 5742 000	1	SCREW M10X20 UNI5931	5711140029
3	145 9186 000	1	BALL BEARING 6000 2RS	5711140002
4	33006156	1	RING D 26 UNI7437	5711140067
5	L08300000	1	WASHER 8X24 UNI6592	5711140012
6	146 0547 000	1	ARM BELT TENSIONER	5711140032
7	146 0548 000	1	SPACER 10.1X16X4	5711140032
8	146 0549 000	1	BUSH FLANGED	5711140032
9	146 0583 000	1	ROLLER BELT TENSIONER	5711140033
10	33005607	1	NUT SELF L. M8 UNI7474	5711140066
11	33003998	1	SCREW M8X40 UNI5739	5711140062
12	146 0550 000	1	BUSHING	5711140032

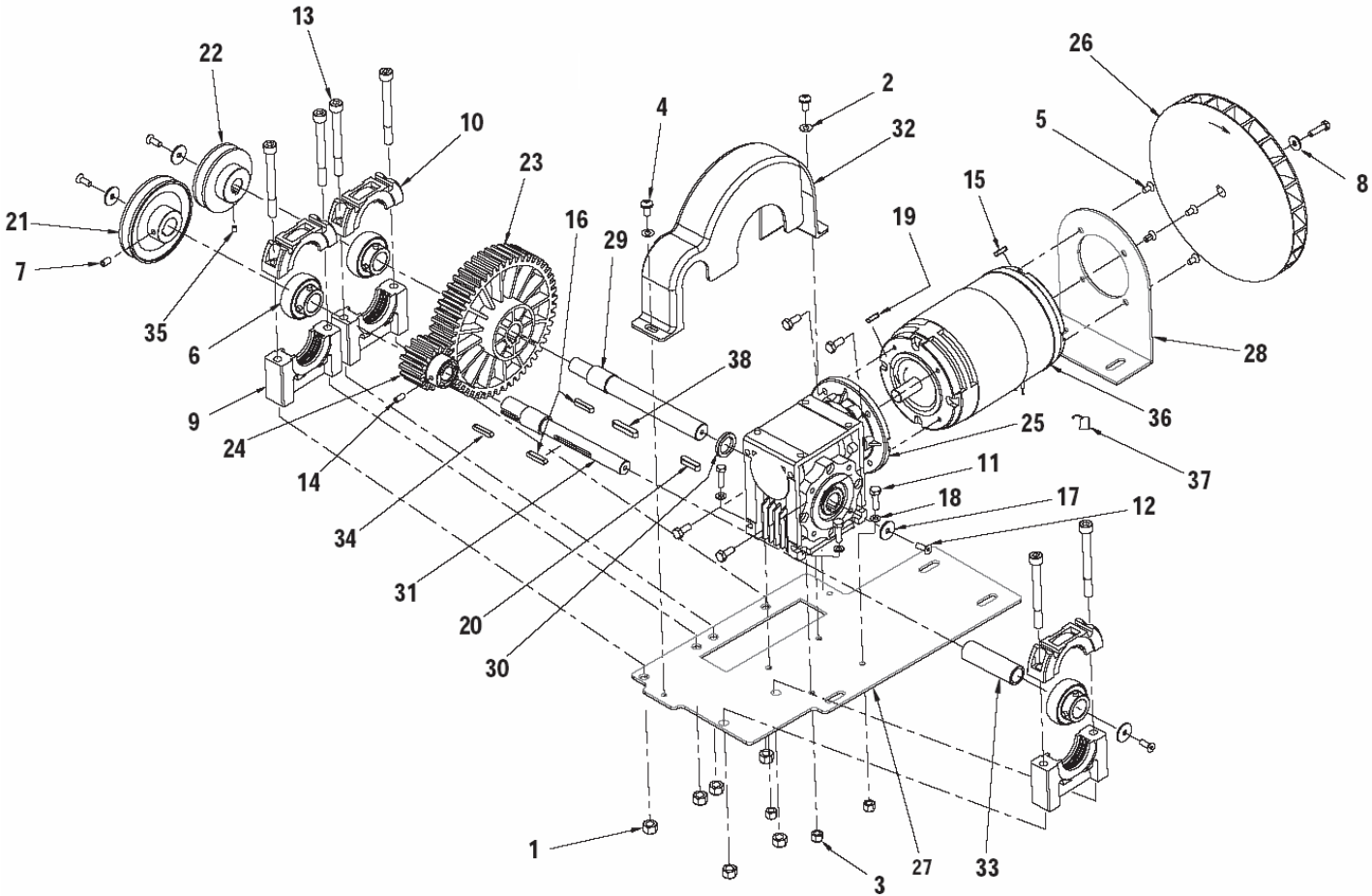
Reduction motor assy

FLOORTEC 550B

10-07-2009

Part List ID
550B15

17



Reduction motor assy

FLOORTEC 550B

10-07-2009

Part List ID

550B15

18

Pos	Part no.	Qty	Description	EAN
1	33005607	6	NUT SELF L. M8 UNI7474	5711140066
2	L08602395	2	WASHER FLAT 6X12,5	
3	33005603	3	NUT SELF L. M5 UNI7474	5711140066
4	L08603706	2	SCREW M6X12 UNI7687	5711140015
5	33004574	4	SCREW M6X12 UNI5933	5711140064
6	145 1123 000	3	BALL BEARING YAT204	5711140002
7	145 1228 000	1	SCREW GRUB M6X10 UNI5929	5711140022
8	145 1261 000	1	WASHER 5X15X1.5 UNI6593	5711140022
9	145 1976 000	3	SUPPORT BEARING LOW	5711140025
10	145 1977 000	3	SUPPORT BEARING UPPER	5711140025
11	33003963	4	SCREW M5X20 UNI5739	5711140061
12	33004562	4	SCREW M5X14 UNI5933	5711140064
13	145 5741 000	6	SCREW M8X80 UNI5931	5711140029
14	145 5913 000	1	SCREW GRUB M5X6 UNI5929	5711140030
15	145 6055 000	1	KEY 4X4X16 UNI6604A	5711140023
16	145 8024 000	2	KEY 5X5X25 UNI6604A	5711140023
17	145 9129 000	4	WASHER 6X24X2 UNI6593	5711140022
18	33005912	3	WASHER M5 UNI6592	5711140067
19	145 9774 000	1	KEY 5X5X20 UNI6604A	5711140023
20	145 9899 000	1	KEY 6X6X25 UNI6604A	5711140023
21	146 0514 000	1	PULLEY D.85	5711140032
22	146 0516 000	1	PULLEY D.65	5711140032
23	146 0523 000	1	GEAR	5711140032
24	146 0524 000	1	GEAR	5711140032
25	1463248000	1	REDUCTION GEAR COMPLETE 15 1	5711140049
26	146 0537 000	1	FAN	OPTIONAL 5711140032
27	146 0538 000	1	PLATE SUPPORTING	NOT SHOWN 5711140032
28	146 0539 000	1	BRACKET	5711140032
29	146 0540 000	1	SHAFT TRANSMISSION	5711140032
30	146 0541 000	1	BUSHING	5711140032
31	146 0542 000	1	SHAFT MAIN BROOM	5711140032
32	146 0605 000	1	COVER	5711140033
33	146 0616 000	1	SPACER	5711140033
34	146 0619 000	1	KEY 3/16X3/16X1	5711140033
35	146 0621 000	1	SCREW GRUB M4X 6 UNI5929	5711140033
36	146 0531 000	1	MOTOR ELECTRIC 600W 12V	5711140032
37	145 5042 000	4	CARBON BRUSH	5711140027
38	146 0769 000	1	KEY 6X6X40 UNI6604A	5711140033

Dust control system

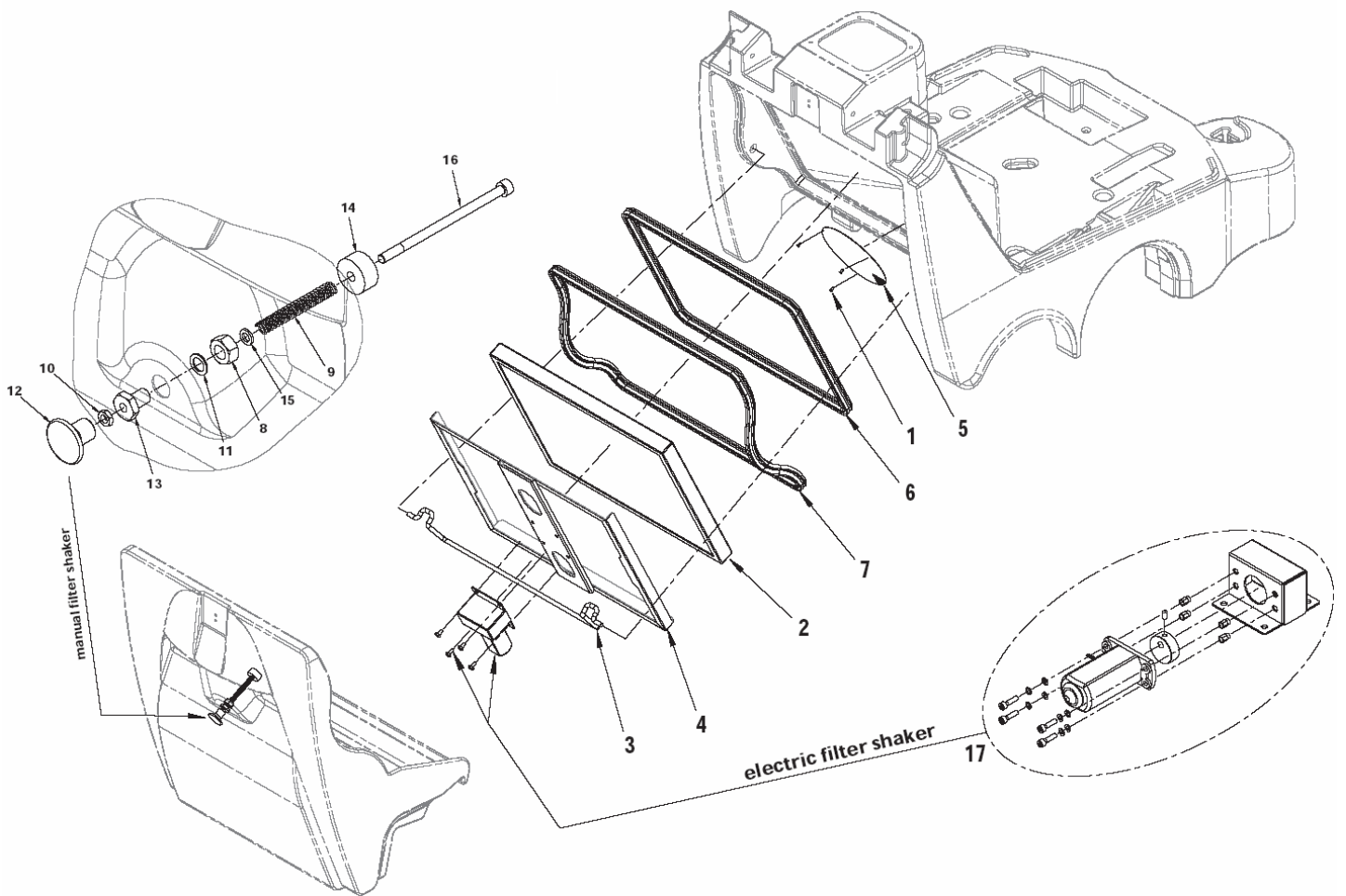
FLOORTEC 550B

10-07-2009

Part List ID

550B17

19



Dust control system

FLOORTEC 550B

10-07-2009

Part List ID

550B17

20

Pos	Part no.	Qty	Description	EAN
0	146 2671 000	1	INSTRUCTIONS INSTALLATION	5711140045
1	146 0669 000	3	SCREW 4X12	5711140033
2	145 4746 000	1	FILTER POLYESTER BIA	5715492038
			OPTION	
2	145 4806 000	1	FILTER PAPER	5715492038
2	146 0368 000	1	FILTER POLYES.BIA ANTIST.	5715492038
			OPTION	
3	146 0573 000	1	HOOK FILTER	5711140032
4	146 0574 000	1	FRAME FILTER	5711140032
5	146 0607 000	1	PROTECTION FAN	5711140033
6	146 0629 000	1	GASKET L1600 LL 1600	5711140033
7	146 0630 000	1	GASKET L1800	5711140033
8	33005505	1	NUT HEX M10 UNI5588	5711140065
9	145 1935 000	1	SPRING	5711140025
10	33005531	1	NUT HEX M6 UNI5589	5711140066
11	33005869	1	WASHER M10 UNI8842A	5711140067
12	145 4802 000	1	KNOB M6	5711140026
13	145 4928 000	1	BUSHING FILTER SHAKER	5711140027
14	145 5020 000	1	MASS FILTER SHAKER	5711140027
15	33005913	1	WASHER M6 UNI6592	5711140067
16	146 0636 000	1	SCREW M6X110 UNI5931	5711140033
17	146 2670 000	1	SHAKER FILTER ELECT.KIT FOR BATTERY VER	5715492038
			OPTION	

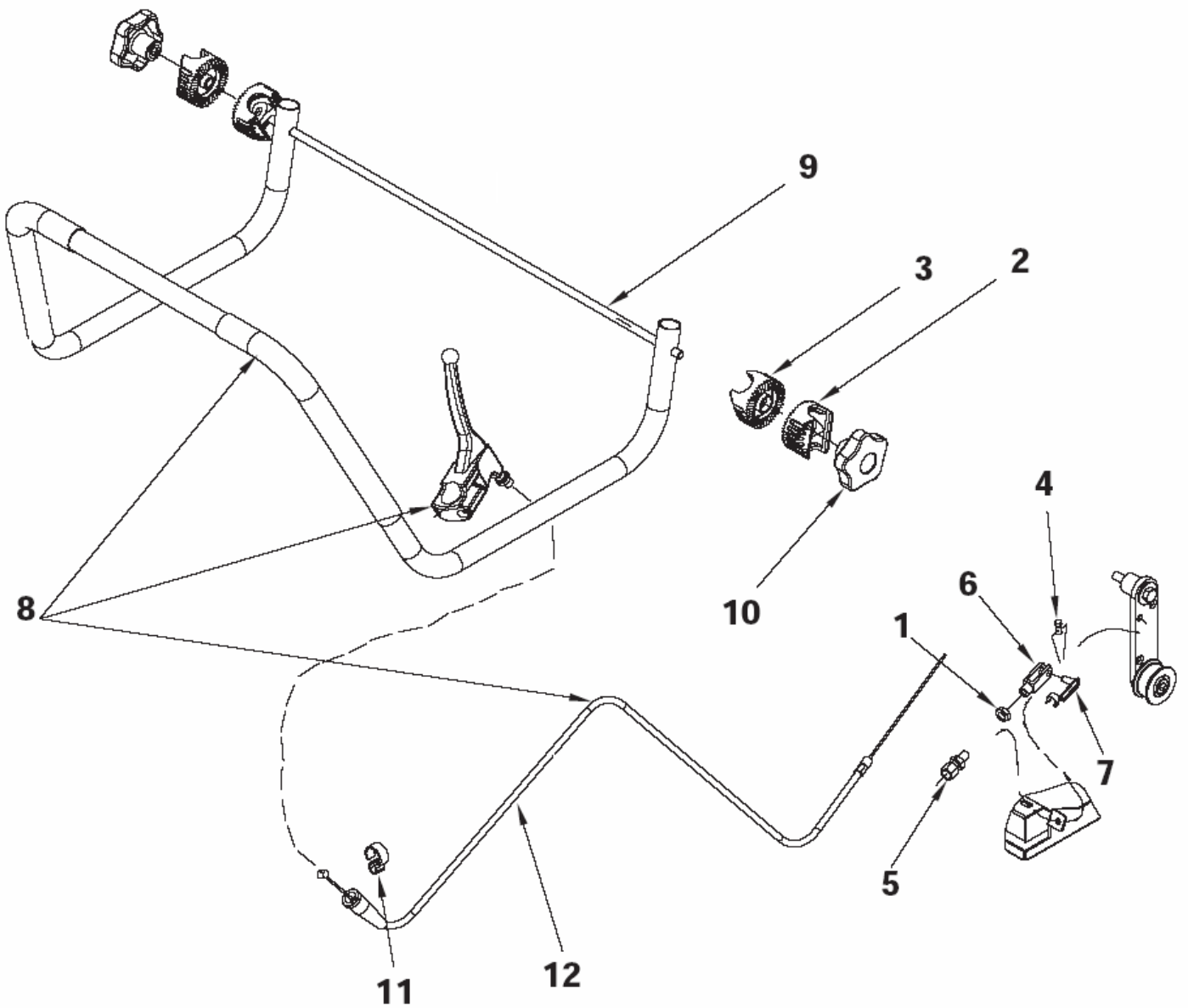
Handle system

FLOORTEC 550B

10-07-2009

Part List ID
550B19

21



Handle system

FLOORTEC 550B

10-07-2009

Part List ID

550B19

22

Pos	Part no.	Qty	Description	EAN
1	33005533	1	NUT HEX M8 UNI5589	5711140066
2	56264118	2	RATCHET HANDLE ADJ.	
3	56264123	2	RATCHET HANDLE ADJ.	
4	145 8110 000	1	CLAMP D.6	5711140004
5	145 9283 000	1	ADJUSTER M8X35	5711140004
6	145 9409 000	1	FORK M6	5711140023
7	145 9410 000	1	CIRCLIP M6	5711140023
8	146 2317 000	1	HANDLE COMPLETE	5711140043
9	146 0534 000	1	SHAFT. HANDLE	5711140032
10	146 1852 000	2	KNOB M8	5711140041
11	146 0763 000	1	FIXING CABLE	5711140033
12	146 2309 000	1	CABLE.FLAP RAISING DEVICE	5711140043

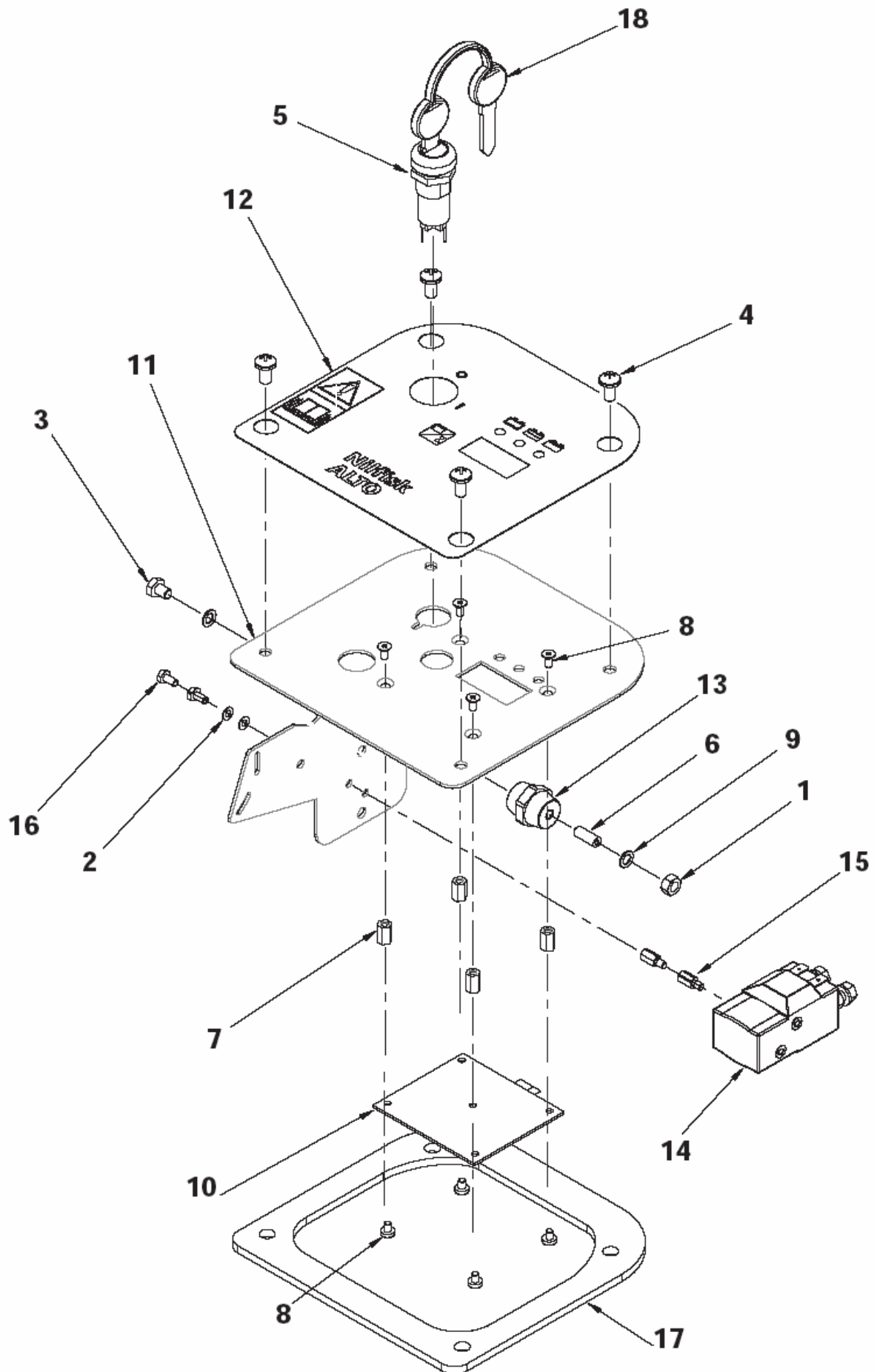
Control panel

FLOORTEC 550B

10-07-2009

Part List ID
550B21

23



Control panel

FLOORTEC 550B

10-07-2009

Part List ID

550B21

24

Pos	Part no.	Qty	Description	EAN
1	33005502	1	NUT HEX M6 UNI5588	5711140065
2	33005862	2	WASHER M4 UNI8842A	5711140067
3	146 1453 000	1	SCREW M6X10 UNI5739	5711140038
4	L08603706	4	SCREW M6X12 UNI7687	5711140015
5	146 2888 000	1	SWITCH KEY WITH CAP	5711140046
6	146 1678 000	1	SCREW GRUB M6X30 UNI5929	5711140040
7	146 0657 000	4	SPACER	5711140033
8	146 0658 000	8	SCREW M4X8 UNI7688	5711140033
9	33005851	2	WASHER M6 UNI1751B	5711140067
10	146 0570 000	1	CARD ELECTRONIC	5711140032
11	146 0576 000	1	PANEL CONTROL	5711140032
12	146 2319 000	1	DECAL CONTROL PANEL	5711140043
13	146 0708 000	1	INSULATOR M6 WHITE	5711140033
14	146 0626 000	1	SWITCH ELECTROMAGNETIC 12V	5711140033
15	146 0627 000	2	SPACER M4 L10	5711140033
16	146 0632 000	2	SCREW M4X8 UNI5739	5711140033
17	146 0697 000	1	GASKET	5711140033
18	146 2887 000	1	KEY -2 PCS-	5711140046

Hub assy - left & right

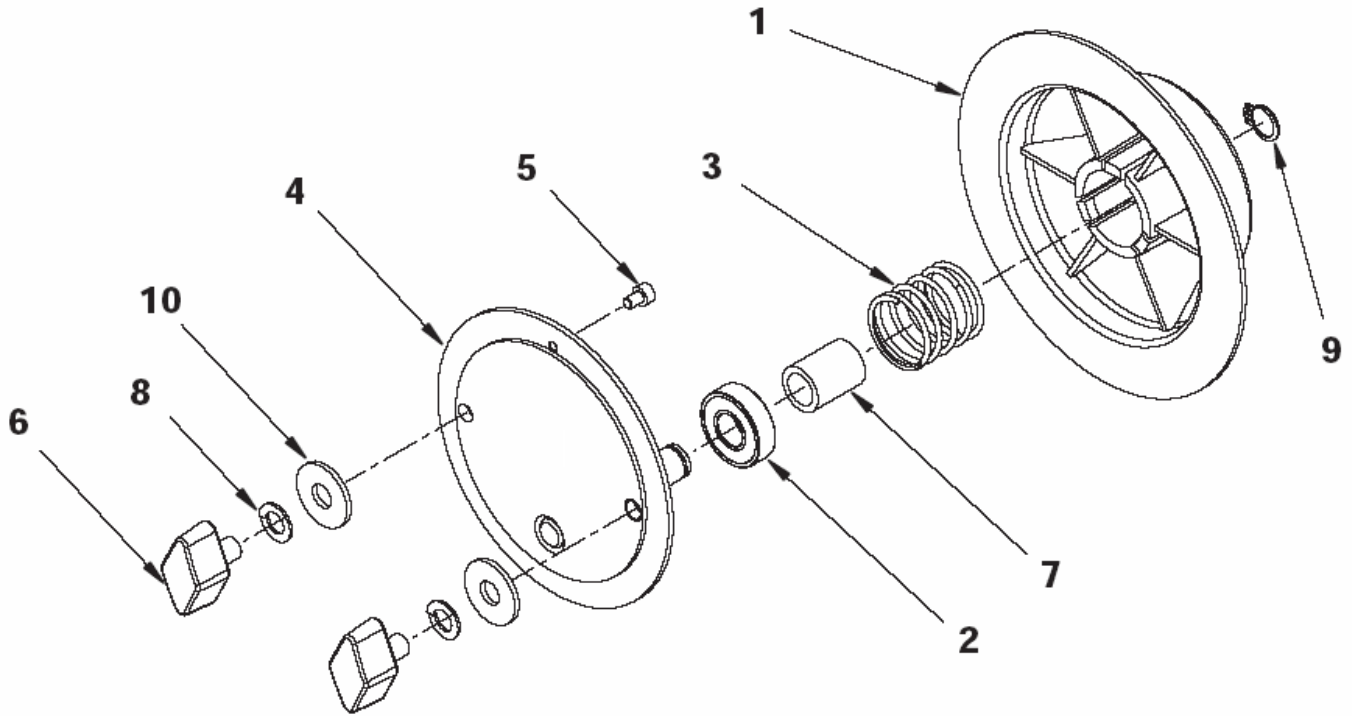
FLOORTEC 550B

10-07-2009

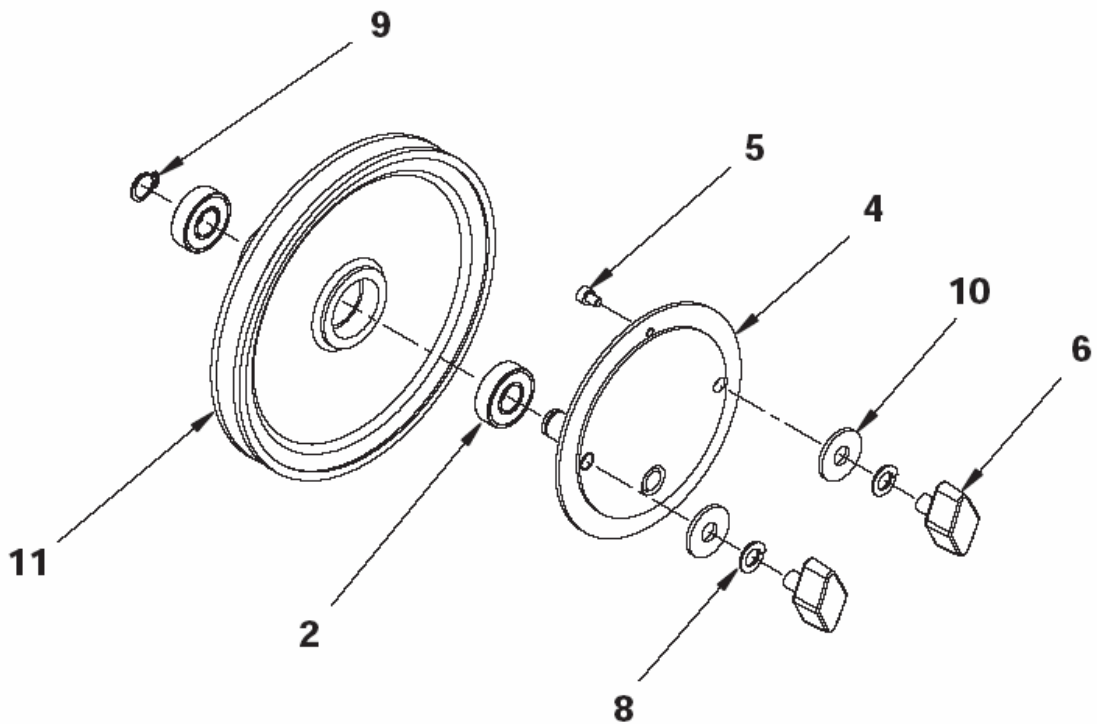
Part List ID
550B23

25

Left hub assembly



Right hub assembly



Hub assy - left & right

FLOORTEC 550B

10-07-2009

Part List ID
550B23

26

Pos	Part no.	Qty	Description	EAN
1	145 0269 000	1	HUB	5711140003
2	145 0270 000	3	BALL BEARING 6001 2RS	5711140002
3	145 0271 000	1	SPRING	5711140004
4	145 0272 000	2	PIN	5711140003
5	33004305	2	SCREW M4X6 UNI5931	5711140064
6	145 1211 000	4	KNOB M 8X 12	5711140012
7	145 2663 000	1	SPACER 12X17X22.5	5711140004
8	33005842	4	WASHER M8 UNI1751B	5711140067
9	33006051	2	RING D 12 UNI7435	5711140067
10	L08300000	4	WASHER 8X24 UNI6592	5711140012
11	145 2617 000	1	PULLEY	5711140003

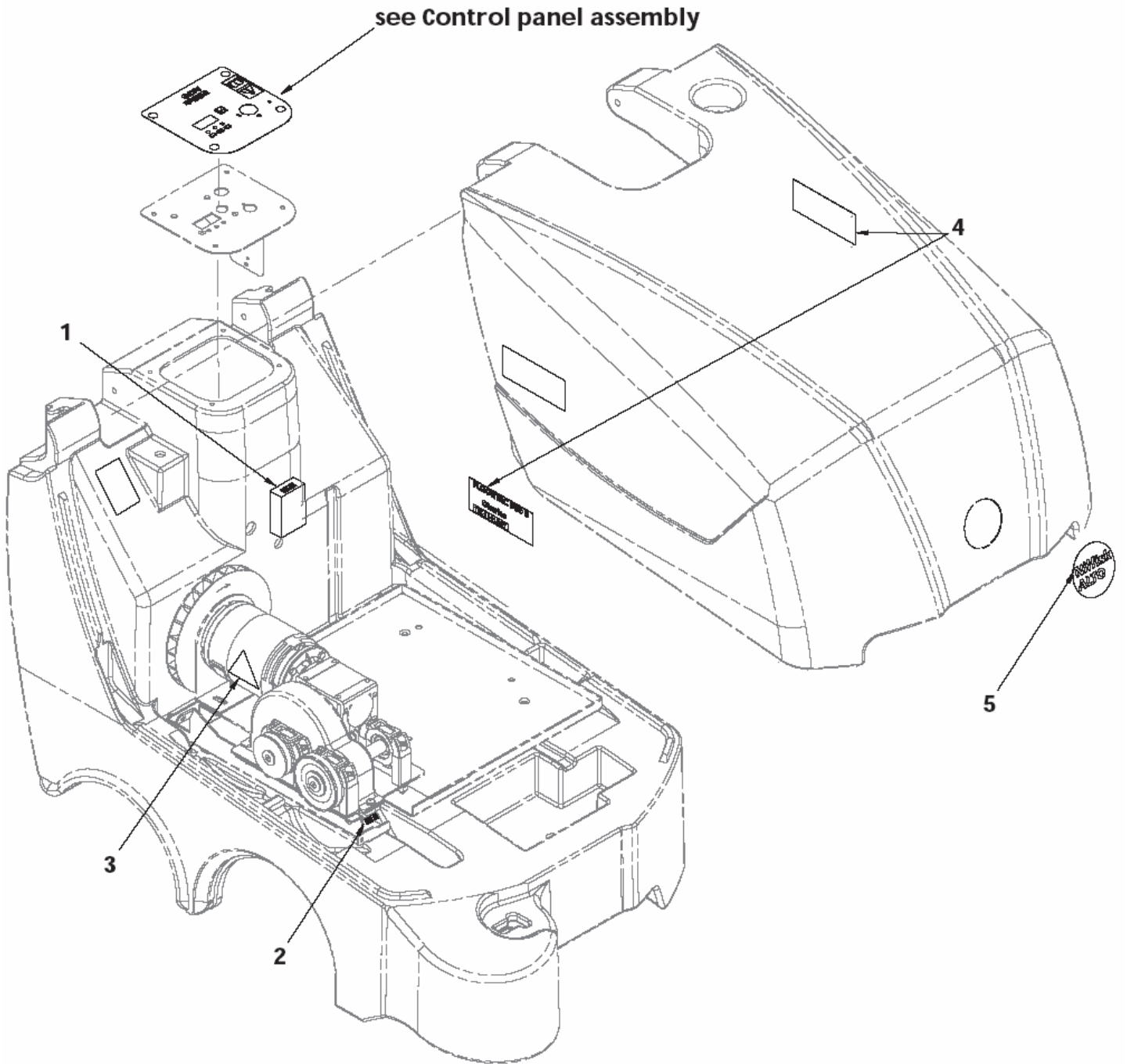
Decals

FLOORTEC 550B

10-07-2009

Part List ID
550B25

27



Decals

FLOORTEC 550B

10-07-2009

Part List ID
550B25

28

Pos	Part no.	Qty	Description	EAN
1	145 0578 000	1	DECAL FUSE 60A	5711140021
2	145 1355 000	1	DECAL FUSE 15A	5711140021
3	145 1431 000	1	DECAL DANGER MOVING PARTS	5711140021
4	1463821000	2	DECAL FLOORTEC 550 B	5711140137
5	146 2321 000	1	DECAL NILFISK-ALTO ROUND	5711140043

Electrical parts

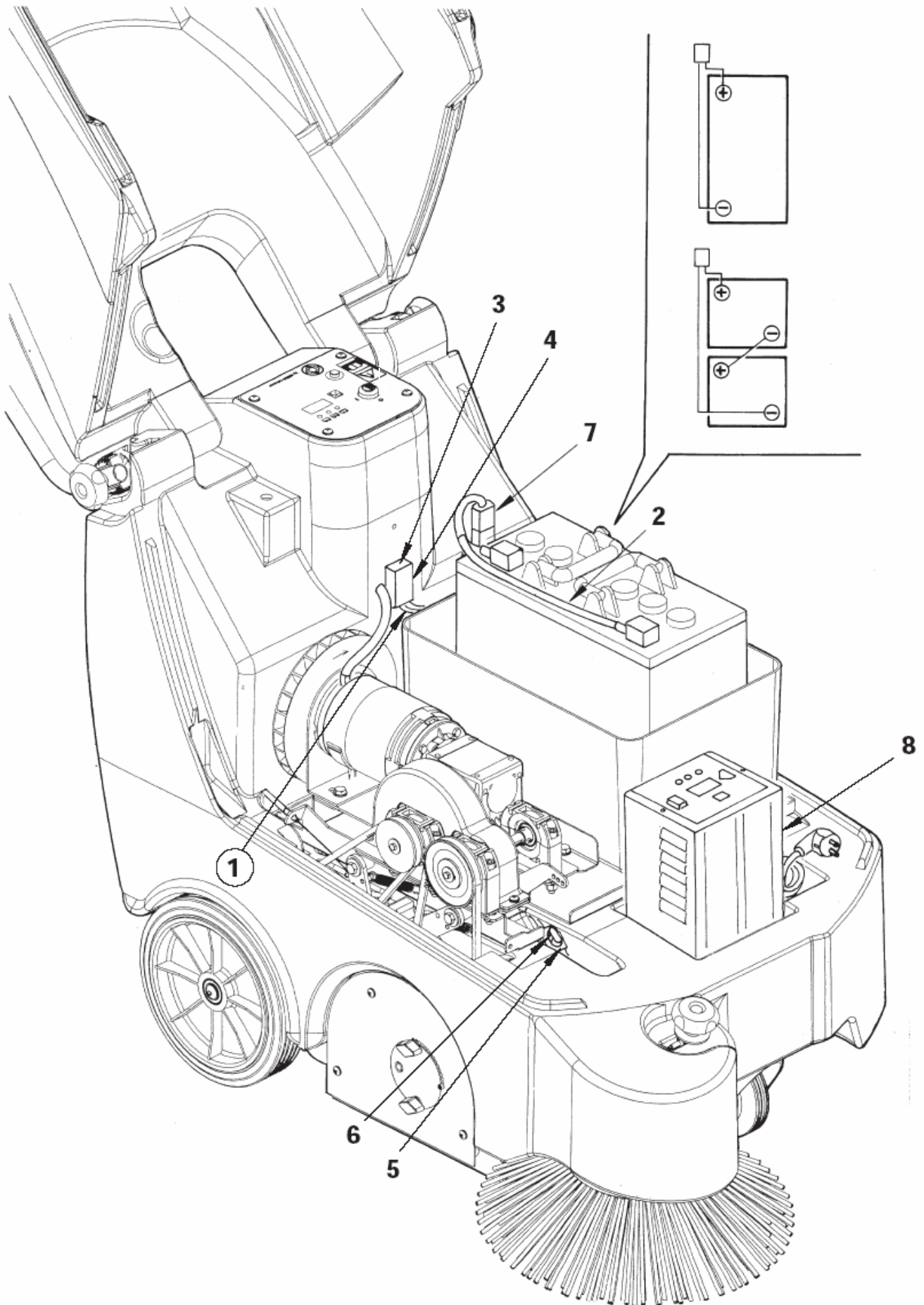
FLOORTEC 550B

10-07-2009

Part List ID

550B27

29



Electrical parts

FLOORTEC 550B

10-07-2009

Part List ID

550B27

30

Pos	Part no.	Qty	Description	EAN
1	146 0579 000	1	HARNESS MACHINE SW700SB	5711140033
2	146 0581 000	1	HARNESS BATTERY SW 700S B	5711140033
3	146 0659 000	1	HOLDER MAXIFUSE	5711140033
4	909 6218 000	1	FUSE 60A	5711140126
5	146 0660 000	1	HOLDER FUSE	5711140033
6	145 9853 000	1	FUSE 15A	5711140009
7	145 9417 000	1	CONNECTOR 50A	5711140008
8	146 2359 000	1	CHARGER BATTERY ON BOARD 12V-20A EU	5715492038

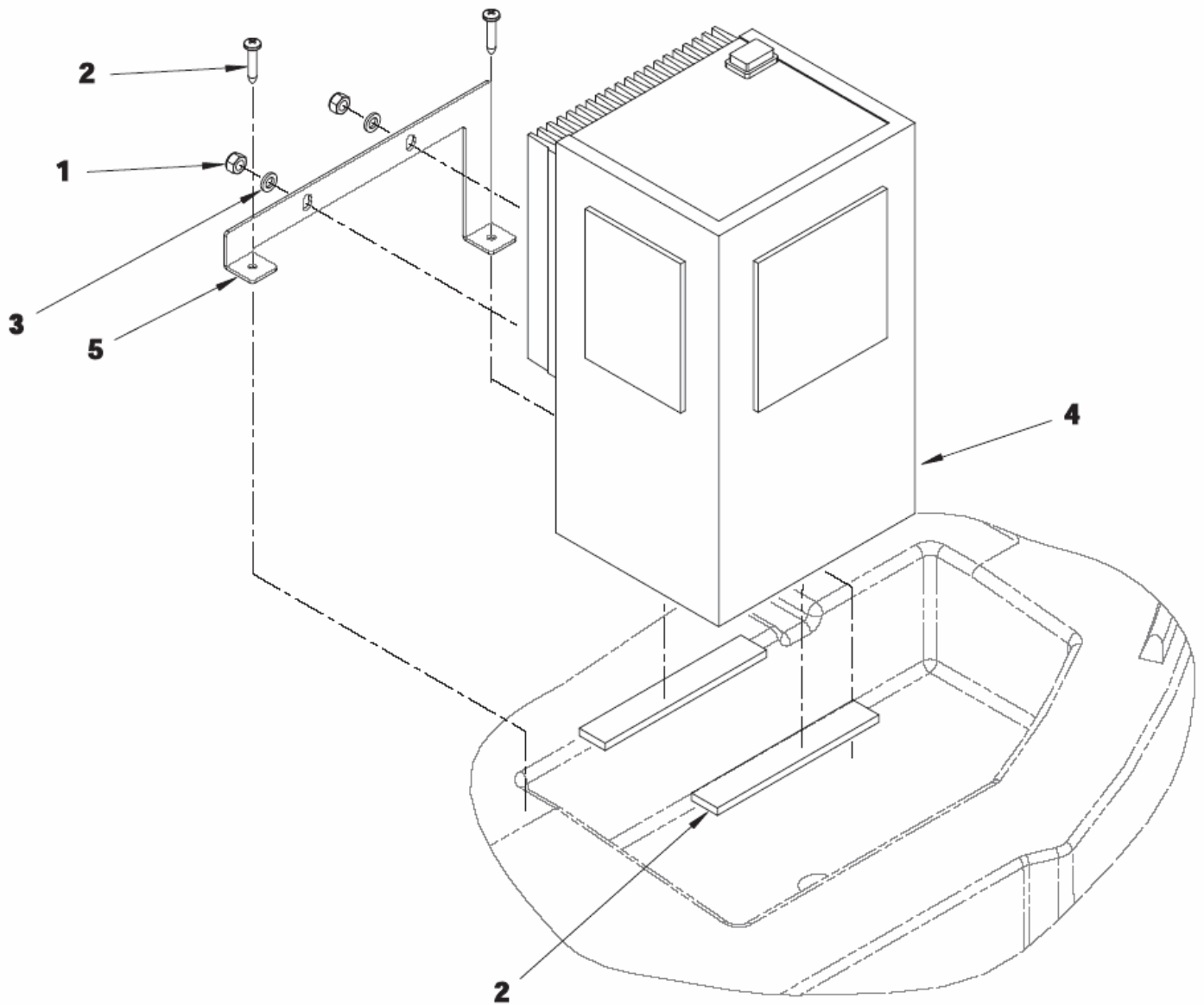
Battery charger

FLOORTEC 550B

10-07-2009

Part List ID
550B29

31



Battery charger

FLOORTEC 550B

10-07-2009

Part List ID

550B29

32

Pos	Part no.	Qty	Description	EAN
1	33005604	1	NUT SELF L. M6 UNI7474	5711140066
2	145 5876 000	1	SCREW 4.8X25 UNI6954 THD FORM	5711140030
3	33005913	1	WASHER M6 UNI6592	5711140067
4	146 2359 000	1	CHARGER BATTERY ON BOARD 12V-20A EU	5715492038
5	146 0655 000	1	BRACKET	5711140033
6	146 0656 000	1	GASKET	5711140033



heupel Reinigungstechnik GmbH

Gottlieb Daimler Str. 6
88214 Ravensburg

Tel: (049) 0751 - 35905-3
Fax: (049) 0751 - 35905-59

email: info@heupel-gmbh.de
www.heupel-gmbh.de

Shop: www.heupel-shop.de

Heupel - Reinigungstechnik - Beratung, Verkauf, Service, alles aus einer Hand.

Wear - maintenance parts

FLOORTEC 550B

10-07-2009

Part List ID

550B31

33

No Drawing For Part List

Wear - maintenance parts

FLOORTEC 550B

10-07-2009

Part List ID

550B31

34

Pos	Part no.	Qty	Description		EAN
1	145 4806 000	1	FILTER PAPER	WEAR PARTS	5715492038
2	146 0554 000	2	SKIRT FRONT/REAR NEOPRENE BLACK	WEAR PARTS	5715492038
3	146 0555 000	2	SKIRT SIDE	WEAR PARTS	5711140032
4	145 4792 000	1	BROOM MAIN 265X500 PPL 0,7	WEAR PARTS	5715492038
5	909 6218 000	1	FUSE 60A	WEAR PARTS	5711140126
6	145 9853 000	1	FUSE 15A	WEAR PARTS	5711140009
7	145 1899 000	1	BROOM SIDE 180X420 PPL 0,8	WEAR PARTS	5715492038
8	145 0274 000	2	SPRING	ORDINARY MAINTENANCE	5711140004
9	146 0150 00	1	BELT	ORDINARY MAINTENANCE	5711140031
10	146 0767 000	1	BELT	ORDINARY MAINTENANCE	5711140033
11	146 0519 000	1	HUB SIDE BROOM	ORDINARY MAINTENANCE	5711140032
12	145 5042 000	4	CARBON BRUSH	ORDINARY MAINTENANCE	5711140027
13	146 0513 000	1	WHEEL RIGHT	EXTRAORDINARY MAINTENANCE	5711140032
14	146 0518 000	1	WHEEL LEFT	EXTRAORDINARY MAINTENANCE	5711140032
15	146 2309 000	1	CABLE.FLAP RAISING DEVICE	EXTRAORDINARY MAINTENANCE	5711140043
16	146 0532 000	1	REDUCTION GEARMOTOR36-42W 12V	EXTRAORDINARY MAINTENANCE	5711140032
17	146 0626 000	1	SWITCH ELECTROMAGNETIC 12V	EXTRAORDINARY MAINTENANCE	5711140033
18	146 0570 000	1	CARD ELECTRONIC	EXTRAORDINARY MAINTENANCE	5711140032
19	146 0565 000	1	SWITCH. HOOD SAFETY	EXTRAORDINARY MAINTENANCE	5711140032
20	145 0270 000	3	BALL BEARING 6001 2RS	EXTRAORDINARY MAINTENANCE	5711140002
21	145 1123 000	3	BALL BEARING YAT204	EXTRAORDINARY MAINTENANCE	5711140002
22	145 9186 000	2	BALL BEARING 6000 2RS	EXTRAORDINARY MAINTENANCE	5711140002
23	146 0629 000	1	GASKET L1600 LL 1600	EXTRAORDINARY MAINTENANCE	5711140033
24	146 0630 000	1	GASKET L1800	EXTRAORDINARY MAINTENANCE	5711140033

Options

FLOORTEC 550B

10-07-2009

Part List ID
550B33

35

No Drawing For Part List

Options

FLOORTEC 550B

10-07-2009

Part List ID
550B33

36

Pos	Part no.	Qty	Description	EAN
0	145 4746 000	1	FILTER POLYESTER BIA	5715492038
0	145 4959 000	1	BROOM SIDE 180X420 STEEL MIX	5715492038
0	145 4973 000	1	BROOM MAIN 265X500 STEEL MIX	5715492038
0	145 4974 000	1	BROOM MAIN 265X500 NATURAL FIBRE	5715492038
0	145 4976 000	1	BROOM SIDE 180X420 NATURAL FIBRE	5715492038
0	146 0368 000	1	FILTER POLYES.BIA ANTIST.	5715492038
0	146 0554 000	1	SKIRT FRONT/REAR NEOPRENE BLACK	5715492038
0	146 0569 000	1	WHEEL, CASTOR WITH BRAKE	5715492038
0	146 0586 000	1	SKIRT FRONT NON MARKING	5715492038
0	146 0587 000	1	SKIRT SIDE NON MARKING	5715492038
0	146 0628 000	1	SKIRT FRONT SOFT	5715492038
0	146 0678 000	1	BRUSH SIDE 180X347 NYLON	5715492038
0	146 0782 000	1	PRE-FILTER	5715492038
0	146 2670 000	1	SHAKER FILTER ELECT.KIT FOR BATTERY VER	5715492038